

Parkin Rabbit Polyclonal Antibody



CAB0968

Product Information

Size:

20uL, 50uL, 100uL, 200uL

Observed MW:

52KDa

Calculated MW:

23kDa/30-51kDa

Applications:

WB IHC IF

Reactivity:

Human, Mouse, Rat

Protein Background

The precise function of this gene is unknown; however, the encoded protein is a component of a multiprotein E3 ubiquitin ligase complex that mediates the targeting of substrate proteins for proteasomal degradation. Mutations in this gene are known to cause Parkinson disease and autosomal recessive juvenile Parkinson disease. Alternative splicing of this gene produces multiple transcript variants encoding distinct isoforms. Additional splice variants of this gene have been described but currently lack transcript support.

Immunogen information

Gene ID:

5071

Uniprot

O60260

Synonyms:

PRKN; AR-JP; LPRS2; PARK2; PDJ; Parkin

Antibody Information

Recommended dilutions:

WB 1:500 - 1:2000 IHC 1:50
- 1:200 IF 1:50 - 1:200

Source:

Rabbit

Isotype:

IgG

Purification:

Affinity purification

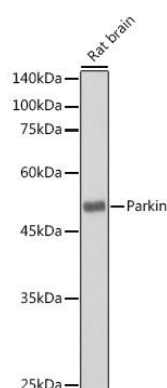
Immunogen:

Recombinant fusion protein containing a sequence corresponding to amino acids 1-300 of human Parkin

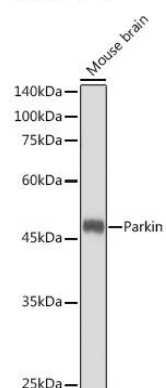
Storage:

Store at -20°C. Avoid freeze / thaw cycles. Buffer: PBS with 0.02% sodium azide, 50% glycerol, pH7.3.

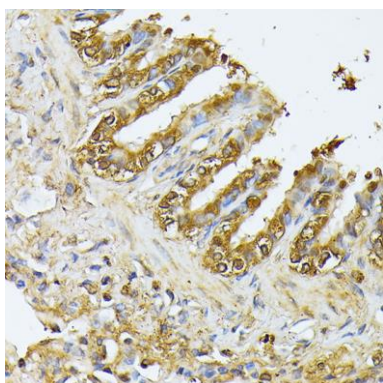
Product Images



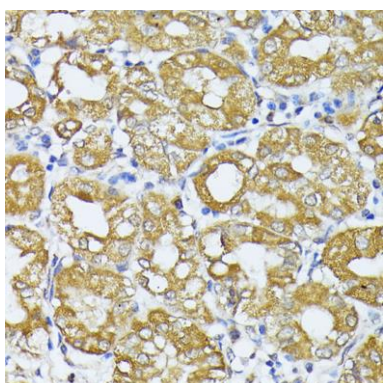
Western blot analysis of extracts of Rat brain, using Parkin antibody (CAB0968) at 1:1000 dilution. Secondary antibody: HRP Goat Anti-Rabbit IgG (H+L) (CABS014) at 1:10000 dilution. Lysates/proteins: 25ug per lane. Blocking buffer: 3% nonfat dry milk in TBST. Detection: ECL Basic Kit (CABM00020). Exposure time: 180s.



Western blot analysis of extracts of Mouse brain, using Parkin antibody (CAB0968) at 1:1000 dilution. Secondary antibody: HRP Goat Anti-Rabbit IgG (H+L) (CABS014) at 1:10000 dilution. Lysates/proteins: 25ug per lane. Blocking buffer: 3% nonfat dry milk in TBST. Detection: ECL Enhanced Kit (CABM00021). Exposure time: 180s.



Immunohistochemistry of paraffin-embedded Rat lung using Parkin antibody (CAB0968) at dilution of 1:100 (40x lens).



Immunohistochemistry of paraffin-embedded Human stomach using Parkin antibody (CAB0968) at dilution of 1:100 (40x lens).