

Hsp60 Rabbit Polyclonal Antibody



CAB0969

Product Information

Size:

20uL, 50uL, 100uL, 200uL

Observed MW:

61kDa

Calculated MW:

17kDa/61kDa

Applications:

WB IHC IF IP

Reactivity:

Human, Mouse, Rat

Antibody Information

Recommended dilutions:

WB 1:500 - 1:2000 IHC 1:50

- 1:200 IF 1:50 - 1:100 IP

1:50 - 1:200

Source:

Rabbit

Isotype:

IgG

Purification:

Affinity purification

Protein Background

This gene encodes a member of the chaperonin family. The encoded mitochondrial protein may function as a signaling molecule in the innate immune system. This protein is essential for the folding and assembly of newly imported proteins in the mitochondria. This gene is adjacent to a related family member and the region between the 2 genes functions as a bidirectional promoter. Several pseudogenes have been associated with this gene. Two transcript variants encoding the same protein have been identified for this gene. Mutations associated with this gene cause autosomal recessive spastic paraplegia 13.

Immunogen information

Gene ID:

3329

Uniprot

P10809

Synonyms:

HSPD1; CPN60; GROEL; HLD4; HSP-60; HSP60; HSP65; HuCHA60;

SPG13; Hsp60

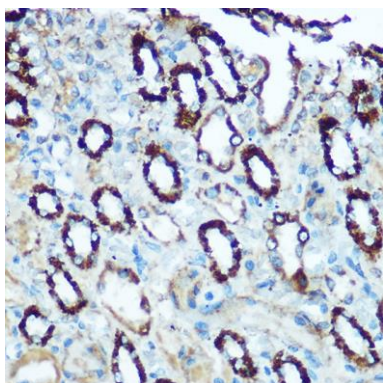
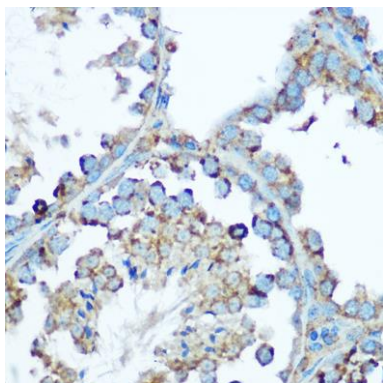
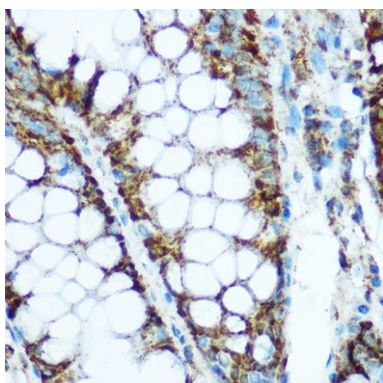
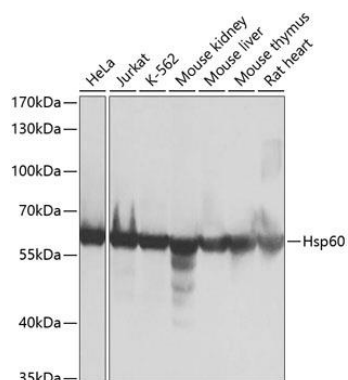
Immunogen:

Recombinant fusion protein containing a sequence corresponding to amino acids 27-240 of human Hsp60 (NP_002147.2).

Storage:

Store at -20°C. Avoid freeze / thaw cycles. Buffer: PBS with 0.02% sodium azide, 50% glycerol, pH7.3.

Product Images



Western blot analysis of extracts of various cell lines, using Hsp60 antibody (CAB0969) at 1:1000 dilution. Secondary antibody: HRP Goat Anti-Rabbit IgG (H+L) (CABS014) at 1:10000 dilution. Lysates/proteins: 25ug per lane. Blocking buffer: 3% nonfat dry milk in TBST. Detection: ECL Basic Kit (CABM00020). Exposure time: 10s.

Immunohistochemistry of paraffin-embedded human colon using Hsp60 Rabbit pAb (CAB0969) at dilution of 1:100 (40x lens).

Immunohistochemistry of paraffin-embedded mouse testis using Hsp60 Rabbit pAb (CAB0969) at dilution of 1:100 (40x lens).

Immunohistochemistry of paraffin-embedded rat kidney using Hsp60 Rabbit pAb (CAB0969) at dilution of 1:100 (40x lens).