

# TGM2 Rabbit Polyclonal Antibody



CAB0981

---

## Product Information

### Size:

20uL, 50uL, 100uL, 200uL

### Observed MW:

90kDa

### Calculated MW:

38kDa/61kDa/77kDa

### Applications:

WB IHC

### Reactivity:

Human, Mouse

## Antibody Information

### Recommended dilutions:

WB 1:500 - 1:2000 IHC

1:100 - 1:200

### Source:

Rabbit

### Isotype:

IgG

### Purification:

Affinity purification

## Protein Background

Transglutaminases are enzymes that catalyze the crosslinking of proteins by epsilon-gamma glutamyl lysine isopeptide bonds. While the primary structure of transglutaminases is not conserved, they all have the same amino acid sequence at their active sites and their activity is calcium-dependent. The protein encoded by this gene acts as a monomer, is induced by retinoic acid, and appears to be involved in apoptosis. Finally, the encoded protein is the autoantigen implicated in celiac disease. Two transcript variants encoding different isoforms have been found for this gene.

## Immunogen information

### Gene ID:

7052

### Uniprot

P21980

### Synonyms:

TGM2; TG(C); TGC

### Immunogen:

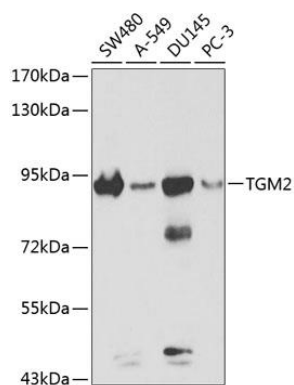
Recombinant protein of human TGM2

### Storage:

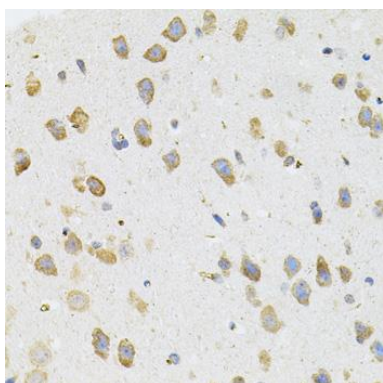
Store at -20°C. Avoid freeze / thaw cycles. Buffer: PBS with 0.02% sodium azide, 50% glycerol, pH7.3.

## Product Images

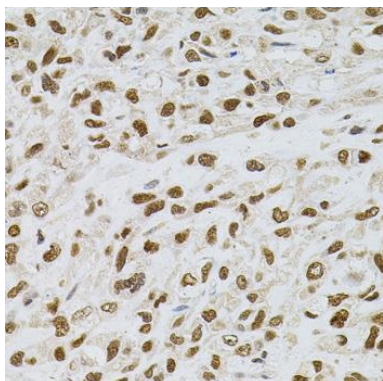
---



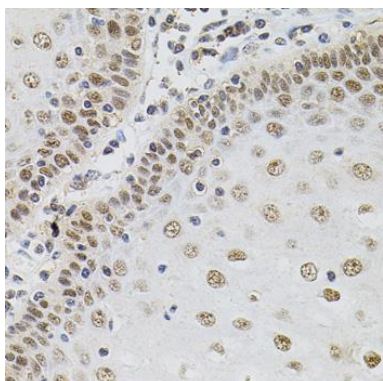
Western blot analysis of extracts of various cell lines, using TGM2 antibody (CAB0981) at 1:300 dilution. Secondary antibody: HRP Goat Anti-Rabbit IgG (H+L) (CABS014) at 1:10000 dilution. Lysates/proteins: 25ug per lane. Blocking buffer: 3% nonfat dry milk in TBST.



Immunohistochemistry of paraffin-embedded mouse brain using TGM2 antibody (CAB0981) (40x lens).



Immunohistochemistry of paraffin-embedded human lung cancer using TGM2 antibody (CAB0981) (40x lens).



Immunohistochemistry of paraffin-embedded human esophagus using TGM2 antibody (CAB0981) (40x lens).