

MSH6 Rabbit Polyclonal Antibody



CAB0983

Product Information

Size:

20uL, 50uL, 100uL, 200uL

Observed MW:

160kDa

Calculated MW:

119kDa/120kDa/137kDa/152kDa

Applications:

WB IHC IF

Reactivity:

Human, Mouse, Rat, Monkey

Antibody Information

Recommended dilutions:

WB 1:500 - 1:2000 IHC 1:50
- 1:200 IF 1:20 - 1:100

Source:

Rabbit

Isotype:

IgG

Purification:

Affinity purification

Protein Background

This gene encodes a member of the DNA mismatch repair MutS family. In E. coli, the MutS protein helps in the recognition of mismatched nucleotides prior to their repair. A highly conserved region of approximately 150 aa, called the Walker-A adenine nucleotide binding motif, exists in MutS homologs. The encoded protein heterodimerizes with MSH2 to form a mismatch recognition complex that functions as a bidirectional molecular switch that exchanges ADP and ATP as DNA mismatches are bound and dissociated. Mutations in this gene may be associated with hereditary nonpolyposis colon cancer, colorectal cancer, and endometrial cancer. Transcripts variants encoding different isoforms have been described.

Immunogen information

Gene ID:

2956

Uniprot

P52701

Synonyms:

MSH6; GTBP; GTMBP; HNPCC5; HSAP; p160

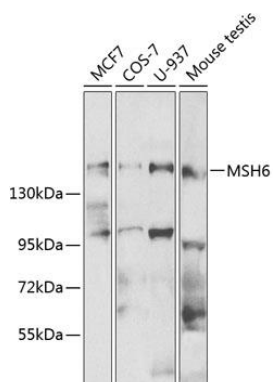
Immunogen:

Recombinant fusion protein containing a sequence corresponding to amino acids 1-290 of human MSH6 (NP_000170.1).

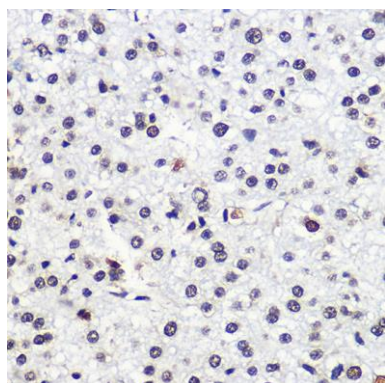
Storage:

Store at -20°C. Avoid freeze / thaw cycles. Buffer: PBS with 0.02% sodium azide, 50% glycerol, pH7.3.

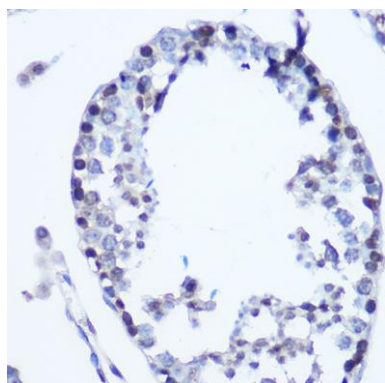
Product Images



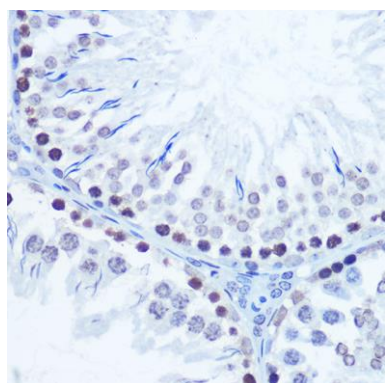
Western blot analysis of extracts of various cell lines, using MSH6 antibody (CAB0983) at 1:500 dilution. Secondary antibody: HRP Goat Anti-Rabbit IgG (H+L) (CABS014) at 1:10000 dilution. Lysates/proteins: 25ug per lane. Blocking buffer: 3% nonfat dry milk in TBST.



Immunohistochemistry of paraffin-embedded human liver cancer using MSH6 Rabbit pAb (CAB0983) at dilution of 1:100 (40x lens).



Immunohistochemistry of paraffin-embedded mouse testis using MSH6 Rabbit pAb (CAB0983) at dilution of 1:100 (40x lens).



Immunohistochemistry of paraffin-embedded rat testis using MSH6 Rabbit pAb (CAB0983) at dilution of 1:100 (40x lens).