

clAP1 Rabbit Polyclonal Antibody



CAB0985

Product Information

Size:

20uL, 50uL, 100uL, 200uL

Observed MW:

69kDa

Calculated MW:

64kDa/69kDa

Applications:

WB

Reactivity:

Human, Mouse

Antibody Information

Recommended dilutions:

WB 1:500 - 1:2000

Source:

Rabbit

Isotype:

IgG

Purification:

Affinity purification

Protein Background

The protein encoded by this gene is a member of a family of proteins that inhibits apoptosis by binding to tumor necrosis factor receptor-associated factors TRAF1 and TRAF2, probably by interfering with activation of ICE-like proteases. This encoded protein inhibits apoptosis induced by serum deprivation and menadione, a potent inducer of free radicals. Alternatively spliced transcript variants encoding different isoforms have been found for this gene.

Immunogen information

Gene ID:

329

Uniprot

Q13490

Synonyms:

API1; HIAP2; Hiap-2; MIHB; RNF48; c-IAP1; clAP1; BIRC2

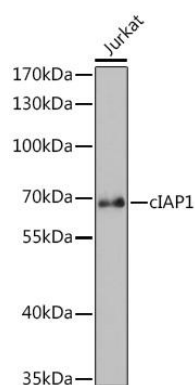
Immunogen:

Recombinant fusion protein containing a sequence corresponding to amino acids 1-300 of human clAP1 (NP_001157.1).

Storage:

Store at -20°C. Avoid freeze / thaw cycles. Buffer: PBS with 0.02% sodium azide, 50% glycerol, pH7.3.

Product Images



Western blot analysis of extracts of Jurkat cells, using cIAP1 antibody (CAB0985) at 1:1000 dilution. Secondary antibody: HRP Goat Anti-Rabbit IgG (H+L) (CABS014) at 1:10000 dilution. Lysates/proteins: 25ug per lane. Blocking buffer: 3% nonfat dry milk in TBST. Detection: ECL Enhanced Kit (CABM00021). Exposure time: 90s.