

# SNAP25 Rabbit Polyclonal Antibody



CAB0986

## Product Information

### Size:

20uL, 50uL, 100uL, 200uL

### Observed MW:

30kDa

### Calculated MW:

23kDa

### Applications:

WB IHC IF

### Reactivity:

Human, Mouse, Rat

## Antibody Information

### Recommended dilutions:

WB 1:500 - 1:2000 IHC 1:50  
- 1:200 IF 1:20 - 1:100

### Source:

Rabbit

### Isotype:

IgG

### Purification:

Affinity purification

## Protein Background

Synaptic vesicle membrane docking and fusion is mediated by SNAREs (soluble N-ethylmaleimide-sensitive factor attachment protein receptors) located on the vesicle membrane (v-SNAREs) and the target membrane (t-SNAREs). The assembled v-SNARE/t-SNARE complex consists of a bundle of four helices, one of which is supplied by v-SNARE and the other three by t-SNARE. For t-SNAREs on the plasma membrane, the protein syntaxin supplies one helix and the protein encoded by this gene contributes the other two. Therefore, this gene product is a presynaptic plasma membrane protein involved in the regulation of neurotransmitter release. Two alternative transcript variants encoding different protein isoforms have been described for this gene.

## Immunogen information

### Gene ID:

6616

### Uniprot

P60880

### Synonyms:

SNAP25; CMS18; RIC-4; RIC4; SEC9; SNAP; SNAP-25; SUP;  
bA416N4.2; dJ1068F16.2

### Immunogen:

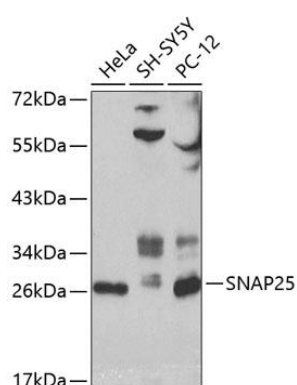
Recombinant fusion protein containing a sequence corresponding to amino acids 1-206 of human SNAP25 (NP\_003072.2).

### Storage:

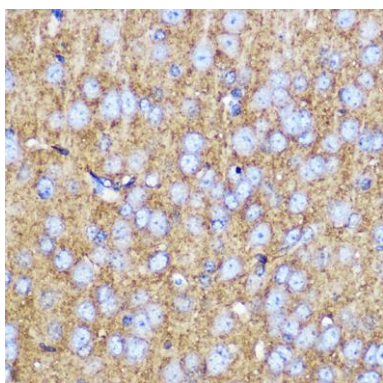
Store at -20°C. Avoid freeze / thaw cycles. Buffer: PBS with 0.02% sodium azide, 50% glycerol, pH7.3.

## Product Images

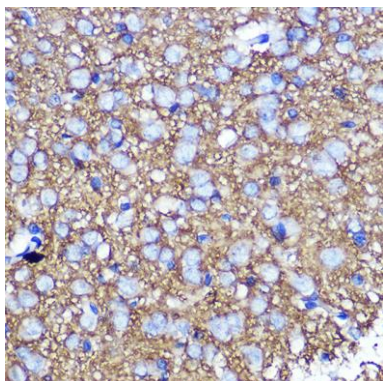
---



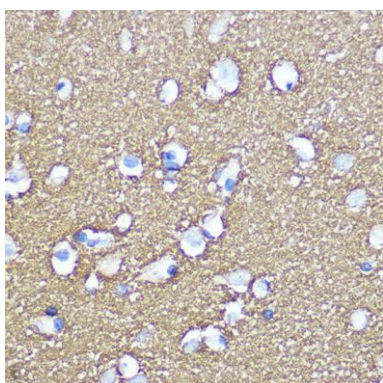
Western blot analysis of extracts of various cell lines, using SNAP25 antibody (CAB0986) at 1:1000 dilution. Secondary antibody: HRP Goat Anti-Rabbit IgG (H+L) (CABS014) at 1:10000 dilution. Lysates/proteins: 25ug per lane. Blocking buffer: 3% nonfat dry milk in TBST.



Immunohistochemistry of paraffin-embedded mouse brain using SNAP25 Rabbit pAb (CAB0986) at dilution of 1:100 (40x lens).



Immunohistochemistry of paraffin-embedded rat brain using SNAP25 Rabbit pAb (CAB0986) at dilution of 1:100 (40x lens).



Immunohistochemistry of paraffin-embedded human brain using SNAP25 Rabbit pAb (CAB0986) at dilution of 1:100 (40x lens).