

HSP90B1 Rabbit Polyclonal Antibody



CAB0989

Product Information

Size:

20uL, 50uL, 100uL, 200uL

Observed MW:

110kDa

Calculated MW:

92kDa

Applications:

WB IHC IF

Reactivity:

Human, Mouse, Rat

Protein Background

This gene encodes a member of a family of adenosine triphosphate(ATP)-metabolizing molecular chaperones with roles in stabilizing and folding other proteins. The encoded protein is localized to melanosomes and the endoplasmic reticulum. Expression of this protein is associated with a variety of pathogenic states, including tumor formation. There is a microRNA gene located within the 5' exon of this gene. There are pseudogenes for this gene on chromosomes 1 and 15.

Immunogen information

Gene ID:

7184

Uniprot

P14625

Synonyms:

HSP90B1; ECGP; GP96; GRP94; HEL-S-125m; HEL35; TRA1

Antibody Information

Recommended dilutions:

WB 1:500 - 1:2000 IHC 1:50
- 1:100 IF 1:50 - 1:100

Source:

Rabbit

Isotype:

IgG

Purification:

Affinity purification

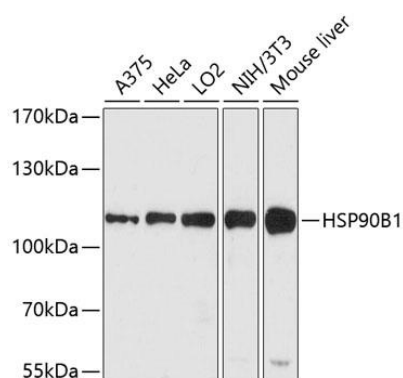
Immunogen:

A synthetic peptide corresponding to a sequence within amino acids 550-650 of human HSP90B1 (NP_003290.1).

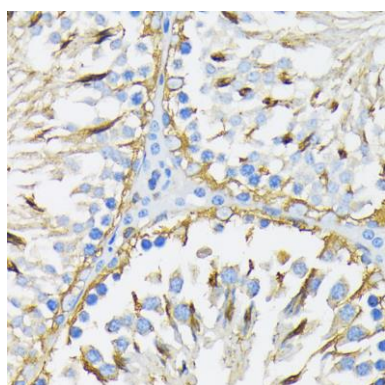
Storage:

Store at -20°C. Avoid freeze / thaw cycles. Buffer: PBS with 0.02% sodium azide, 50% glycerol, pH7.3.

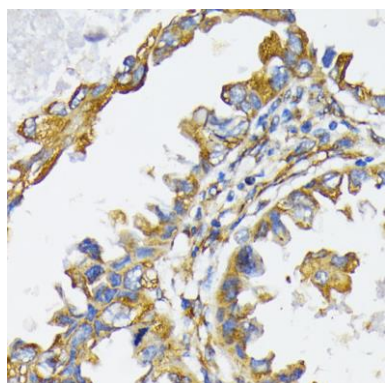
Product Images



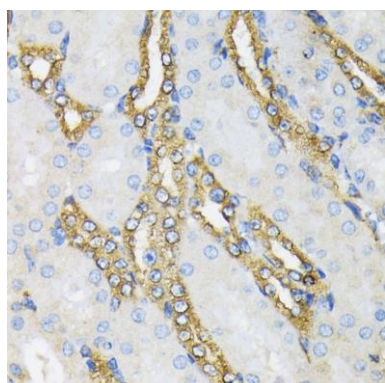
Western blot analysis of extracts of various cell lines, using HSP90B1 antibody (CAB0989) at 1:1000 dilution. Secondary antibody: HRP Goat Anti-Rabbit IgG (H+L) (CABS014) at 1:10000 dilution. Lysates/proteins: 25ug per lane. Blocking buffer: 3% nonfat dry milk in TBST. Detection: ECL Enhanced Kit (CABM00021). Exposure time: 90s.



Immunohistochemistry of paraffin-embedded rat testis using HSP90B1 antibody (CAB0989) at dilution of 1:200 (40x lens).



Immunohistochemistry of paraffin-embedded human lung cancer using HSP90B1 antibody (CAB0989) at dilution of 1:200 (40x lens).



Immunohistochemistry of paraffin-embedded mouse kidney using HSP90B1 antibody (CAB0989) at dilution of 1:200 (40x lens).