

# [KO Validated] HK2 Rabbit Polyclonal Antibody



CAB0994

## Product Information

### Size:

20uL, 50uL, 100uL, 200uL

### Observed MW:

102KDa

### Calculated MW:

102kDa

### Applications:

WB IHC

### Reactivity:

Human, Mouse, Rat

## Antibody Information

### Recommended dilutions:

WB 1:500 - 1:2000 IHC 1:50  
- 1:200

### Source:

Rabbit

### Isotype:

IgG

### Purification:

Affinity purification

## Protein Background

Hexokinases phosphorylate glucose to produce glucose-6-phosphate, the first step in most glucose metabolism pathways. This gene encodes hexokinase 2, the predominant form found in skeletal muscle. It localizes to the outer membrane of mitochondria. Expression of this gene is insulin-responsive, and studies in rat suggest that it is involved in the increased rate of glycolysis seen in rapidly growing cancer cells.

## Immunogen information

### Gene ID:

3099

### Uniprot

P52789

### Synonyms:

HK2; HKII; HXK2; hexokinase-2

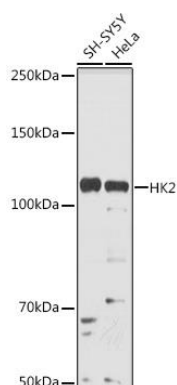
### Immunogen:

Recombinant fusion protein containing a sequence corresponding to amino acids 1-120 of human HK2 (NP\_000180.2).

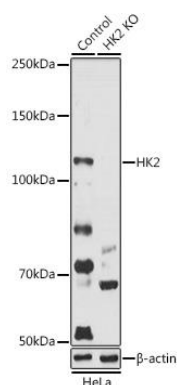
### Storage:

Store at -20°C. Avoid freeze / thaw cycles. Buffer: PBS with 0.02% sodium azide, 50% glycerol, pH7.3.

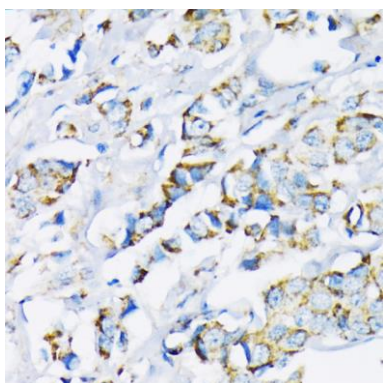
## Product Images



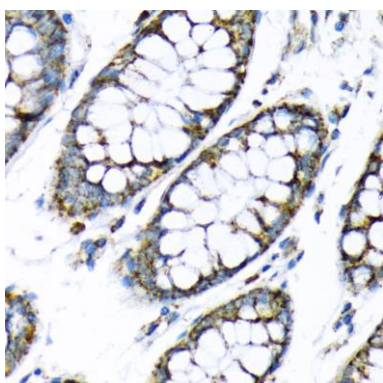
Western blot analysis of extracts of various cell lines, using HK2 antibody (CAB0994) at 1:1000 dilution. Secondary antibody: HRP Goat Anti-Rabbit IgG (H+L) (CABS014) at 1:10000 dilution. Lysates/proteins: 25ug per lane. Blocking buffer: 3% nonfat dry milk in TBST. Detection: ECL Basic Kit (CABM00020). Exposure time: 30s.



Western blot analysis of extracts from normal (control) and HK2 knockout (KO) HeLa cells, using HK2 antibody (CAB0994) at 1:1000 dilution. Secondary antibody: HRP Goat Anti-Rabbit IgG (H+L) (CABS014) at 1:10000 dilution. Lysates/proteins: 25ug per lane. Blocking buffer: 3% nonfat dry milk in TBST. Detection: ECL Basic Kit (CABM00020). Exposure time: 90s.



Immunohistochemistry of paraffin-embedded human breast cancer using HK2 antibody (CAB0994) at dilution of 1:200 (40x lens).



Immunohistochemistry of paraffin-embedded human colon using HK2 antibody (CAB0994) at dilution of 1:200 (40x lens).