

Cyclin H Rabbit Polyclonal Antibody



CAB0995

Product Information

Size:

20uL, 50uL, 100uL, 200uL

Observed MW:

36kDa

Calculated MW:

37kDa

Applications:

WB IP

Reactivity:

Human

Antibody Information

Recommended dilutions:

WB 1:500 - 1:2000 IP 1:50 - 1:200

Source:

Rabbit

Isotype:

IgG

Purification:

Affinity purification

Protein Background

The protein encoded by this gene belongs to the highly conserved cyclin family, whose members are characterized by a dramatic periodicity in protein abundance through the cell cycle. Cyclins function as regulators of CDK kinases. Different cyclins exhibit distinct expression and degradation patterns which contribute to the temporal coordination of each mitotic event. This cyclin forms a complex with CDK7 kinase and ring finger protein MAT1. The kinase complex is able to phosphorylate CDK2 and CDC2 kinases, thus functions as a CDK-activating kinase (CAK). This cyclin and its kinase partner are components of TFIIH, as well as RNA polymerase II protein complexes. They participate in two different transcriptional regulation processes, suggesting an important link between basal transcription control and the cell cycle machinery. A pseudogene of this gene is found on chromosome 4. Alternate splicing results in multiple transcript variants.

Immunogen information

Gene ID:

902

Uniprot

P51946

Synonyms:

CCNH; CAK; Cych; p34; p37; cyclin-H

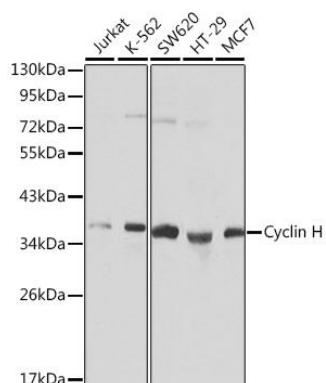
Immunogen:

Recombinant fusion protein containing a sequence corresponding to amino acids 1-323 of human Cyclin H (NP_001230.1).

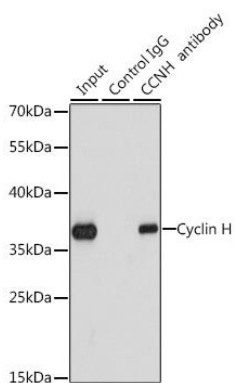
Storage:

Store at -20°C. Avoid freeze / thaw cycles. Buffer: PBS with 0.02% sodium azide, 50% glycerol, pH7.3.

Product Images



Western blot analysis of extracts of various cell lines, using Cyclin H Antibody (CAB0995). Secondary antibody: HRP Goat Anti-Rabbit IgG (H+L) (CABS014) at 1:10000 dilution. Lysates/proteins: 25ug per lane. Blocking buffer: 3% nonfat dry milk in TBST. Detection: ECL Basic Kit (CABM00020).



Immunoprecipitation analysis of 200ug extracts of K562 cells using 1ug Cyclin H antibody (CAB0995). Western blot was performed from the immunoprecipitate using Cyclin H antibody (CAB0995) at a dilution of 1:1000.