

# ID2 Rabbit Polyclonal Antibody



CAB0996

## Product Information

### Size:

20uL, 50uL, 100uL, 200uL

### Observed MW:

15kDa

### Calculated MW:

14kDa

### Applications:

WB IHC

### Reactivity:

Human, Mouse, Rat

## Protein Background

The protein encoded by this gene belongs to the inhibitor of DNA binding family, members of which are transcriptional regulators that contain a helix-loop-helix (HLH) domain but not a basic domain. Members of the inhibitor of DNA binding family inhibit the functions of basic helix-loop-helix transcription factors in a dominant-negative manner by suppressing their heterodimerization partners through the HLH domains. This protein may play a role in negatively regulating cell differentiation. A pseudogene of this gene is located on chromosome 3.

## Immunogen information

### Gene ID:

3398

### Uniprot

Q02363

### Synonyms:

ID2; GIG8; ID2A; ID2H; bHLHb26

## Antibody Information

### Recommended dilutions:

WB 1:500 - 1:2000 IHC 1:50  
- 1:200

### Source:

Rabbit

### Isotype:

IgG

### Purification:

Affinity purification

### Immunogen:

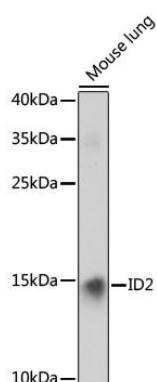
Recombinant fusion protein containing a sequence corresponding to amino acids 75-134 of human ID2 (NP\_002157.2).

### Storage:

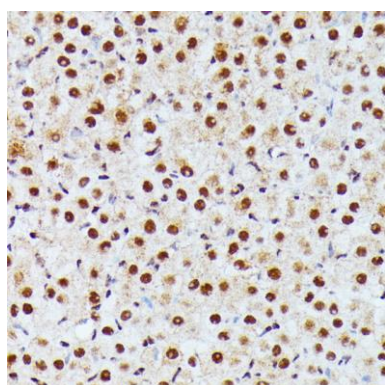
Store at -20°C. Avoid freeze / thaw cycles. Buffer: PBS with 0.02% sodium azide, 50% glycerol, pH7.3.

## Product Images

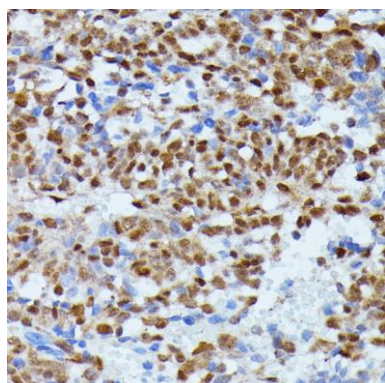
---



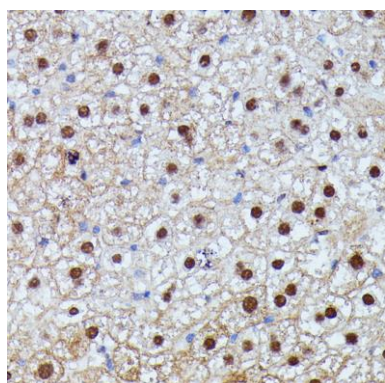
Western blot analysis of extracts of mouse lung, using ID2 antibody (CAB0996) at 1:1000 dilution. Secondary antibody: HRP Goat Anti-Rabbit IgG (H+L) (CABS014) at 1:10000 dilution. Lysates/proteins: 25ug per lane. Blocking buffer: 3% nonfat dry milk in TBST. Detection: ECL Enhanced Kit (CABM00021). Exposure time: 90s.



Immunohistochemistry of paraffin-embedded rat ovary using ID2 antibody (CAB0996) at dilution of 1:100 (40x lens).



Immunohistochemistry of paraffin-embedded human oophoroma using ID2 antibody (CAB0996) at dilution of 1:100 (40x lens).



Immunohistochemistry of paraffin-embedded mouse liver using ID2 antibody (CAB0996) at dilution of 1:100 (40x lens).