

ACSL1 Rabbit Polyclonal Antibody



CAB1000

Product Information

Size:

50uL, 100uL

Observed MW:

78kDa

Calculated MW:

76kDa/77kDa

Applications:

WB IHC IF IP

Reactivity:

Human, Mouse, Rat

Protein Background

The protein encoded by this gene is an isozyme of the long-chain fatty-acid-coenzyme A ligase family. Although differing in substrate specificity, subcellular localization, and tissue distribution, all isozymes of this family convert free long-chain fatty acids into fatty acyl-CoA esters, and thereby play a key role in lipid biosynthesis and fatty acid degradation. Several transcript variants encoding different isoforms have been found for this gene.

Immunogen information

Gene ID:

2180

Uniprot

P33121

Synonyms:

ACS1; FAFL1; FAFL2; LACS; LACS1; LACS2; ACSL1

Antibody Information

Recommended dilutions:

WB 1:200 - 1:1000 IHC 1:50
- 1:200 IF 1:50 - 1:200 IP
1:50 - 1:100

Source:

Rabbit

Isotype:

IgG

Purification:

Affinity purification

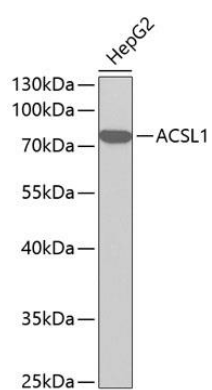
Immunogen:

A synthetic peptide of human ACSL1

Storage:

Store at -20°C. Avoid freeze / thaw cycles. Buffer: PBS with 0.02% sodium azide, 50% glycerol, pH7.3.

Product Images



Western blot analysis of extracts of HepG2 cells, using ACSL1 antibody (CAB1000). Secondary antibody: HRP Goat Anti-Rabbit IgG (H+L) (CABS014) at 1:10000 dilution. Lysates/proteins: 25ug per lane. Blocking buffer: 3% nonfat dry milk in TBST.