

GEN1 Rabbit Polyclonal Antibody



CAB10001

Product Information

Size:

20uL, 50uL, 100uL, 200uL

Observed MW:

103kDa

Calculated MW:

102kDa

Applications:

WB

Reactivity:

Human, Mouse

Antibody Information

Recommended dilutions:

WB 1:500 - 1:2000

Source:

Rabbit

Isotype:

IgG

Purification:

Affinity purification

Protein Background

This gene encodes a member of the Rad2/xeroderma pigmentosum group G nuclease family, whose members are characterized by N-terminal and internal xeroderma pigmentosum group G nuclease domains followed by helix-hairpin-helix domains and disordered C-terminal domains. The protein encoded by this gene is involved in resolution of Holliday junctions, which are intermediate four-way structures that covalently link DNA during homologous recombination and double-strand break repair. The protein resolves Holliday junctions by creating dual incisions across the junction to produce nicked duplex products that can be ligated. In addition, this protein has been found to localize to centrosomes where it has been implicated in regulation of centrosome integrity. Alternative splicing results in multiple transcript variants.

Immunogen information

Gene ID:

348654

Uniprot

Q17RS7

Synonyms:

GEN1; Gen

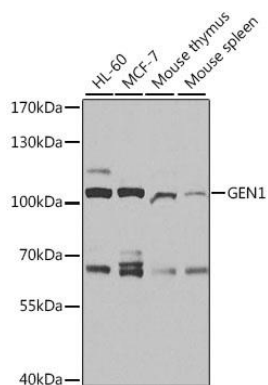
Immunogen:

Recombinant fusion protein containing a sequence corresponding to amino acids 669-908 of human GEN1 (NP_872431.3).

Storage:

Store at -20°C. Avoid freeze / thaw cycles. Buffer: PBS with 0.02% sodium azide, 50% glycerol, pH7.3.

Product Images



Western blot analysis of extracts of various cell lines, using GEN1 antibody (CAB10001) at 1:1000 dilution. Secondary antibody: HRP Goat Anti-Rabbit IgG (H+L) (CABS014) at 1:10000 dilution. Lysates/proteins: 25ug per lane. Blocking buffer: 3% nonfat dry milk in TBST. Detection: ECL Basic Kit (CABM00020). Exposure time: 30s.