

MUC16 Rabbit Polyclonal Antibody



CAB10005

Product Information

Size:

20uL, 50uL, 100uL, 200uL

Observed MW:

Calculated MW:

1519kDa

Applications:

WB IHC

Reactivity:

Human, Mouse, Rat

Antibody Information

Recommended dilutions:

WB 1:500 - 1:2000 IHC 1:50
- 1:200

Source:

Rabbit

Isotype:

IgG

Purification:

Affinity purification

Protein Background

This gene encodes a protein that is a member of the mucin family. Mucins are high molecular weight, O-glycosylated proteins that play an important role in forming a protective mucous barrier, and are found on the apical surfaces of the epithelia. The encoded protein is a membrane-tethered mucin that contains an extracellular domain at its amino terminus, a large tandem repeat domain, and a transmembrane domain with a short cytoplasmic domain. The amino terminus is highly glycosylated, while the repeat region contains 156 amino acid repeats unit that are rich in serines, threonines, and prolines. Interspersed within the repeats are Sea urchin sperm protein Enterokinase and Agrin (SEA) modules, leucine-rich repeats and ankyrin (ANK) repeats. These regions together form the ectodomain, and there is a potential cleavage site found near an SEA module close to the transmembrane domain. This protein is thought to play a role in forming a barrier, protecting epithelial cells from pathogens. Products of this gene have been used as a marker for different cancers, with higher expression levels associated with poorer outcomes.

Immunogen information

Gene ID:

94025

Uniprot

Q8WXI7

Synonyms:

MUC16; CA125; mucin-16

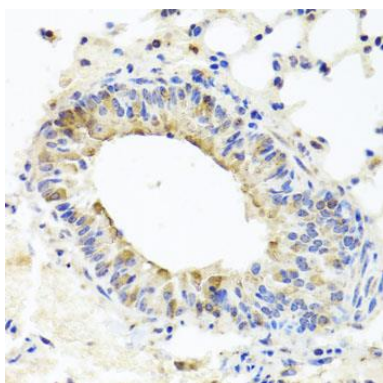
Immunogen:

Recombinant fusion protein containing a sequence corresponding to amino acids 13965-14064 of human MUC16 (NP_078966.2).

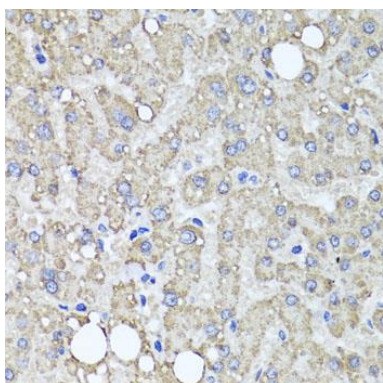
Storage:

Store at -20°C. Avoid freeze / thaw cycles. Buffer: PBS with 0.02% sodium azide, 50% glycerol, pH7.3.

Product Images



Immunohistochemistry of paraffin-embedded mouse lung using MUC16 antibody (CAB10005) at dilution of 1:100 (40x lens).



Immunohistochemistry of paraffin-embedded human liver damage using MUC16 antibody (CAB10005) at dilution of 1:100 (40x lens).