

CD300A Rabbit Polyclonal Antibody



CAB10006

Product Information

Size:

20uL, 50uL, 100uL, 200uL

Observed MW:

67kDa

Calculated MW:

11kDa/16kDa/20kDa/33kDa

Applications:

WB

Reactivity:

Human

Antibody Information

Recommended dilutions:

WB 1:200 - 1:1000

Source:

Rabbit

Isotype:

IgG

Purification:

Affinity purification

Protein Background

This gene encodes a member of the CD300 glycoprotein family of cell surface proteins found on leukocytes involved in immune response signaling pathways. This gene is located on chromosome 17 in a cluster with all but one of the other family members. Multiple transcript variants encoding different isoforms have been found for this gene.

Immunogen information

Gene ID:

11314

Uniprot

Q9UGN4

Synonyms:

CD300A; CLM-8; CMRF-35-H9; CMRF-35H; CMRF35-H; CMRF35-H9; CMRF35H; CMRF35H9; IGSF12; IRC1; IRC1/IRC2; IRC2; IRp60

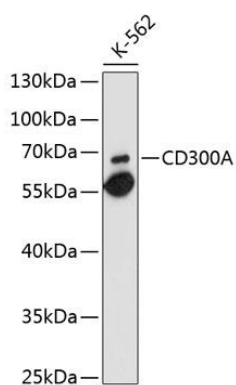
Immunogen:

Recombinant fusion protein containing a sequence corresponding to amino acids 18-180 of human CD300A (NP_009192.2).

Storage:

Store at -20°C. Avoid freeze / thaw cycles. Buffer: PBS with 0.02% sodium azide, 50% glycerol, pH7.3.

Product Images



Western blot analysis of extracts of K-562 cells, using CD300A antibody (CAB10006) at 1:1000 dilution. Secondary antibody: HRP Goat Anti-Rabbit IgG (H+L) (CABS014) at 1:10000 dilution. Lysates/proteins: 25ug per lane. Blocking buffer: 3% nonfat dry milk in TBST. Detection: ECL Enhanced Kit (CABM00021). Exposure time: 90s.