

# SCN8A Rabbit Polyclonal Antibody



CAB10007

---

## Product Information

### Size:

20uL, 50uL, 100uL, 200uL

### Observed MW:

165kDa

### Calculated MW:

145kDa/220kDa/225kDa/226  
kDa

### Applications:

WB

### Reactivity:

Human

## Protein Background

This gene encodes a member of the sodium channel alpha subunit gene family. The encoded protein forms the ion pore region of the voltage-gated sodium channel. This protein is essential for the rapid membrane depolarization that occurs during the formation of the action potential in excitable neurons. Mutations in this gene are associated with mental retardation, pancerebellar atrophy and ataxia. Alternate splicing results in multiple transcript variants.

## Immunogen information

### Gene ID:

6334

### Uniprot

Q9UQD0

### Synonyms:

SCN8A; BFIS5; CERIII; CIAT; EIEE13; MED; NaCh6; Nav1.6; PN4

## Antibody Information

### Recommended dilutions:

WB 1:200 - 1:1000

### Source:

Rabbit

### Isotype:

IgG

### Purification:

Affinity purification

### Immunogen:

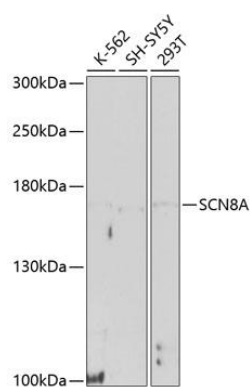
Recombinant fusion protein containing a sequence corresponding to amino acids 1350-1440 of human SCN8A (NP\_055006.1).

### Storage:

Store at -20°C. Avoid freeze / thaw cycles. Buffer: PBS with 0.02% sodium azide, 50% glycerol, pH7.3.

## Product Images

---



Western blot analysis of extracts of various cell lines, using SCN8A antibody (CAB10007) at 1:1000 dilution. Secondary antibody: HRP Goat Anti-Rabbit IgG (H+L) (CABS014) at 1:10000 dilution. Lysates/proteins: 25ug per lane. Blocking buffer: 3% nonfat dry milk in TBST. Detection: ECL Basic Kit (CABM00020). Exposure time: 90s.