

PAPD7 Rabbit Polyclonal Antibody



CAB10017

Product Information

Size:

20uL, 50uL, 100uL, 200uL

Observed MW:

82kDa

Calculated MW:

59kDa/82kDa

Applications:

WB IHC

Reactivity:

Human, Mouse, Rat

Protein Background

The protein encoded by this gene is a DNA polymerase that is likely involved in DNA repair. In addition, the encoded protein may be required for sister chromatid adhesion. Alternatively spliced transcript variants that encode different isoforms have been described.

Immunogen information

Gene ID:

11044

Uniprot

Q5XG87

Synonyms:

PAPD7; LAK-1; LAK1; POLK; POLS; TRF4; TRF4-1; TRF41; TUTASE5

Antibody Information

Recommended dilutions:

WB 1:500 - 1:1000 IHC 1:50
- 1:100

Source:

Rabbit

Isotype:

IgG

Purification:

Affinity purification

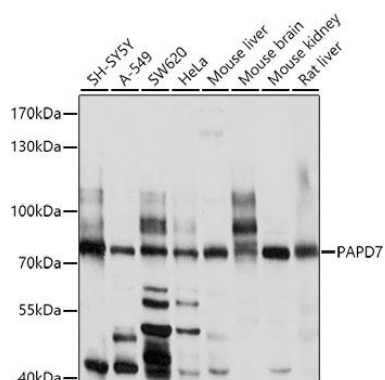
Immunogen:

Recombinant fusion protein containing a sequence corresponding to amino acids 303-542 of human PAPD7 (NP_008930.1).

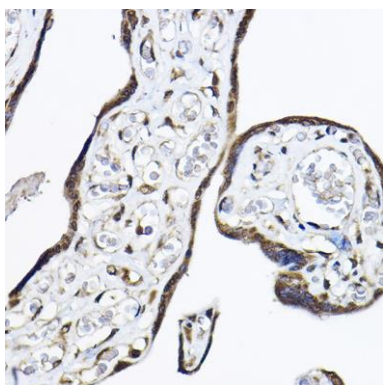
Storage:

Store at -20°C. Avoid freeze / thaw cycles. Buffer: PBS with 0.02% sodium azide, 50% glycerol, pH7.3.

Product Images



Western blot analysis of extracts of various cell lines, using PAPD7 antibody (CAB10017) at 1:1000 dilution. Secondary antibody: HRP Goat Anti-Rabbit IgG (H+L) (CABS014) at 1:10000 dilution. Lysates/proteins: 25ug per lane. Blocking buffer: 3% nonfat dry milk in TBST. Detection: ECL Enhanced Kit (CABM00021). Exposure time: 90s.



Immunohistochemistry of paraffin-embedded human placenta using PAPD7 Rabbit pAb (CAB10017) at dilution of 1:50 (40x lens).