

# RGS13 Rabbit Polyclonal Antibody



CAB10035

## Product Information

**Size:**

20uL, 50uL, 100uL, 200uL

**Observed MW:**

30kDa

**Calculated MW:**

19kDa

**Applications:**

WB IHC

**Reactivity:**

Human, Mouse, Rat

## Antibody Information

**Recommended dilutions:**

WB 1:500 - 1:2000 IHC

1:100 - 1:200

**Source:**

Rabbit

**Isotype:**

IgG

**Purification:**

Affinity purification

## Protein Background

The protein encoded by this gene is a member of the regulator of G protein signaling (RGS) family. RGS family members share similarity with *S. cerevisiae* SST2 and *C. elegans* egl-10 proteins, which contain a characteristic conserved RGS domain. RGS proteins accelerate GTPase activity of G protein alpha-subunits, thereby driving G protein into their inactive GDP-bound form, thus negatively regulating G protein signaling. RGS proteins have been implicated in the fine tuning of a variety of cellular events in response to G protein-coupled receptor activation. The biological function of this gene, however, is unknown. Two transcript variants encoding the same isoform exist.

## Immunogen information

**Gene ID:**

6003

**Uniprot**

O14921

**Synonyms:**

RGS13

**Immunogen:**

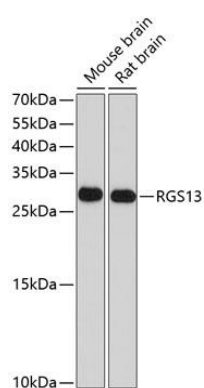
Recombinant fusion protein containing a sequence corresponding to amino acids 1-159 of human RGS13 (NP\_002918.1).

**Storage:**

Store at -20°C. Avoid freeze / thaw cycles. Buffer: PBS with 0.02% sodium azide, 50% glycerol, pH7.3.

## Product Images

---



Western blot analysis of extracts of various cell lines, using RGS13 antibody (CAB10035) at 1:1000 dilution. Secondary antibody: HRP Goat Anti-Rabbit IgG (H+L) (CABS014) at 1:10000 dilution. Lysates/proteins: 25ug per lane. Blocking buffer: 3% nonfat dry milk in TBST. Detection: ECL Basic Kit (CABM00020). Exposure time: 90s.