

SNX6 Rabbit Polyclonal Antibody



CAB10039

Product Information

Size:

20uL, 50uL, 100uL, 200uL

Observed MW:

46kDa

Calculated MW:

33kDa/46kDa

Applications:

WB

Reactivity:

Human, Mouse, Rat

Antibody Information

Recommended dilutions:

WB 1:500 - 1:2000

Source:

Rabbit

Isotype:

IgG

Purification:

Affinity purification

Protein Background

This gene encodes a member of the sorting nexin family. Members of this family contain a phox (PX) domain, which is a phosphoinositide binding domain, and are involved in intracellular trafficking. This protein associates with the long isoform of the leptin receptor, the transforming growth factor-beta family of receptor serine-threonine kinases, and with receptor tyrosine kinases for platelet-derived growth factor, insulin, and epidermal growth factor. This protein may form oligomeric complexes with family member proteins through interactions of both the PX domain and the coiled coil regions of the molecules. Translocation of this protein from the cytoplasm to the nucleus occurs after binding to proviral integration site 1 protein. This gene results in two transcripts encoding two distinct isoforms.

Immunogen information

Gene ID:

58533

Uniprot

Q9UNH7

Synonyms:

SNX6; MSTP010; TFAF2

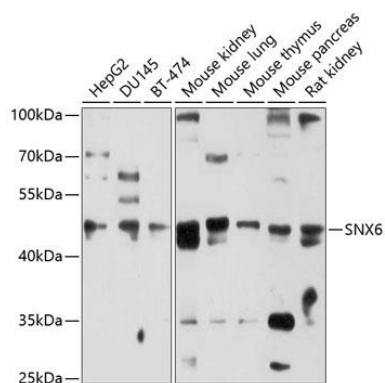
Immunogen:

Recombinant fusion protein containing a sequence corresponding to amino acids 1-290 of human SNX6 (NP_067072.3).

Storage:

Store at -20°C. Avoid freeze / thaw cycles. Buffer: PBS with 0.02% sodium azide, 50% glycerol, pH7.3.

Product Images



Western blot analysis of extracts of various cell lines, using SNX6 antibody (CAB10039) at 1:1000 dilution. Secondary antibody: HRP Goat Anti-Rabbit IgG (H+L) (CABS014) at 1:10000 dilution. Lysates/proteins: 25ug per lane. Blocking buffer: 3% nonfat dry milk in TBST. Detection: ECL Basic Kit (CABM00020). Exposure time: 5s.