

NPC1L1 Rabbit Polyclonal Antibody



CAB10049

Product Information

Size:

20uL, 50uL, 100uL, 200uL

Observed MW:

148kDa

Calculated MW:

79kDa/140kDa/145kDa/148kDa

Applications:

WB

Reactivity:

Human

Antibody Information

Recommended dilutions:

WB 1:1000 - 1:4000

Source:

Rabbit

Isotype:

IgG

Purification:

Affinity purification

Protein Background

The protein encoded by this gene is a multi-pass membrane protein. It contains a conserved N-terminal Niemann-Pick C1 (NPC1) domain and a putative sterol-sensing domain (SSD) which includes a YQRL motif functioning as a plasma membrane to trans-Golgi network transport signal in other proteins. This protein takes up free cholesterol into cells through vesicular endocytosis and plays a critical role in the absorption of intestinal cholesterol. It also has the ability to transport alpha-tocopherol (vitamin E). The drug ezetimibe targets this protein and inhibits the absorption of intestinal cholesterol and alpha-tocopherol. In addition, this protein may play a critical role in regulating lipid metabolism. Polymorphic variations in this gene are associated with plasma total cholesterol and low-density lipoprotein cholesterol (LDL-C) levels and coronary heart disease (CHD) risk. Alternatively spliced transcript variants encoding different isoforms have been found for this gene.

Immunogen information

Gene ID:

29881

Uniprot

Q9UHC9

Synonyms:

NPC1L1; NPC11L1

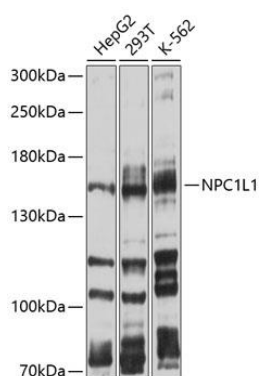
Immunogen:

Recombinant fusion protein containing a sequence corresponding to amino acids 1030-1100 of human NPC1L1 (NP_001095118.1).

Storage:

Store at -20°C. Avoid freeze / thaw cycles. Buffer: PBS with 0.02% sodium azide, 50% glycerol, pH7.3.

Product Images



Western blot analysis of extracts of various cell lines, using NPC1L1 antibody (CAB10049) at 1:1000 dilution. Secondary antibody: HRP Goat Anti-Rabbit IgG (H+L) (CABS014) at 1:10000 dilution. Lysates/proteins: 25ug per lane. Blocking buffer: 3% nonfat dry milk in TBST. Detection: ECL Basic Kit (CABM00020). Exposure time: 15s.