

STX8 Rabbit Polyclonal Antibody



CAB10050

Product Information

Size:

20uL, 50uL, 100uL, 200uL

Observed MW:

27kDa

Calculated MW:

26kDa

Applications:

WB

Reactivity:

Human, Mouse

Protein Background

The gene is a member of the syntaxin family. The encoded protein is involved in protein trafficking from early to late endosomes via vesicle fusion and exocytosis. A related pseudogene has been identified on chromosome 12. Alternative splicing results in multiple transcript variants.

Immunogen information

Gene ID:

9482

Uniprot

Q9UNK0

Synonyms:

STX8; CARB

Antibody Information

Recommended dilutions:

WB 1:500 - 1:2000

Source:

Rabbit

Isotype:

IgG

Purification:

Affinity purification

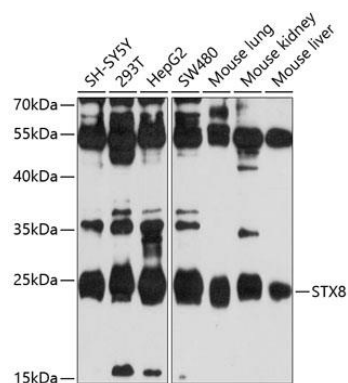
Immunogen:

Recombinant fusion protein containing a sequence corresponding to amino acids 1-215 of human STX8 (NP_004844.1).

Storage:

Store at -20°C. Avoid freeze / thaw cycles. Buffer: PBS with 0.02% sodium azide, 50% glycerol, pH7.3.

Product Images



Western blot analysis of extracts of various cell lines, using STX8 antibody (CAB10050) at 1:1000 dilution. Secondary antibody: HRP Goat Anti-Rabbit IgG (H+L) (CABS014) at 1:10000 dilution. Lysates/proteins: 25ug per lane. Blocking buffer: 3% nonfat dry milk in TBST. Detection: ECL Basic Kit (CABM00020). Exposure time: 90s.