

# FCGR2C Rabbit Polyclonal Antibody



CAB10062

---

## Product Information

### Size:

20uL, 50uL, 100uL, 200uL

### Observed MW:

45kDa

### Calculated MW:

25kDa/29kDa/30kDa/35kDa

### Applications:

WB

### Reactivity:

Human

## Antibody Information

### Recommended dilutions:

WB 1:1000 - 1:4000

### Source:

Rabbit

### Isotype:

IgG

### Purification:

Affinity purification

## Protein Background

### Immunogen information

#### Gene ID:

9103

#### Uniprot

P31995

#### Synonyms:

FCGR2C; CD32; CD32C; CDW32; FCG2; FCRIIC; IGFR2

#### Immunogen:

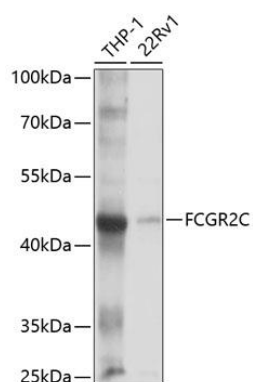
Recombinant fusion protein containing a sequence corresponding to amino acids 43-223 of human FCGR2C (NP\_963857.3).

#### Storage:

Store at -20°C. Avoid freeze / thaw cycles. Buffer: PBS with 0.02% sodium azide, 50% glycerol, pH7.3.

## Product Images

---



Western blot analysis of extracts of various cell lines, using FCGR2C antibody (CAB10062) at 1:1000 dilution. Secondary antibody: HRP Goat Anti-Rabbit IgG (H+L) (CABS014) at 1:10000 dilution. Lysates/proteins: 25ug per lane. Blocking buffer: 3% nonfat dry milk in TBST. Detection: ECL Basic Kit (CABM00020). Exposure time: 10s.