

# PCDH19 Rabbit Polyclonal Antibody



CAB10067

---

## Product Information

### Size:

20uL, 50uL, 100uL, 200uL

### Observed MW:

170kDa

### Calculated MW:

121kDa/126kDa

### Applications:

WB

### Reactivity:

Human

## Protein Background

The protein encoded by this gene is a member of the delta-2 protocadherin subclass of the cadherin superfamily. The encoded protein is thought to be a calcium-dependent cell-adhesion protein that is primarily expressed in the brain. Defects in this gene are a cause of epilepsy female-restricted with mental retardation (EFMR). Three transcript variants encoding different isoforms have been found for this gene.

## Immunogen information

### Gene ID:

57526

### Uniprot

Q8TAB3

### Synonyms:

PCDH19; EFMR; EIEE9

## Antibody Information

### Recommended dilutions:

WB 1:500 - 1:2000

### Source:

Rabbit

### Isotype:

IgG

### Purification:

Affinity purification

### Immunogen:

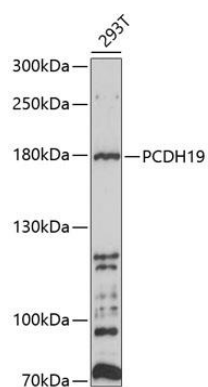
Recombinant fusion protein containing a sequence corresponding to amino acids 568-678 of human PCDH19 (NP\_001171809.1).

### Storage:

Store at -20°C. Avoid freeze / thaw cycles. Buffer: PBS with 0.02% sodium azide, 50% glycerol, pH7.3.

## Product Images

---



Western blot analysis of extracts of 293T cells, using PCDH19 antibody (CAB10067) at 1:1000 dilution. Secondary antibody: HRP Goat Anti-Rabbit IgG (H+L) (CABS014) at 1:10000 dilution. Lysates/proteins: 25ug per lane. Blocking buffer: 3% nonfat dry milk in TBST. Detection: ECL Basic Kit (CABM00020). Exposure time: 90s.