

PLA2R1 Rabbit Polyclonal Antibody



CAB10068

Product Information

Size:

20uL, 50uL, 100uL, 200uL

Observed MW:

169kDa

Calculated MW:

152kDa/168kDa

Applications:

WB IHC

Reactivity:

Human, Mouse, Rat

Protein Background

This gene represents a phospholipase A2 receptor. The encoded protein likely exists as both a transmembrane form and a soluble form. The transmembrane receptor may play a role in clearance of phospholipase A2, thereby inhibiting its action. Polymorphisms at this locus have been associated with susceptibility to idiopathic membranous nephropathy. Alternatively spliced transcript variants encoding different isoforms have been identified.

Immunogen information

Gene ID:

22925

Uniprot

Q13018

Synonyms:

CLEC13C; PLA2-R; PLA2G1R; PLA2IR; PLA2R; PLA2R1

Antibody Information

Recommended dilutions:

WB 1:500 - 1:2000 IHC 1:50
- 1:200

Source:

Rabbit

Isotype:

IgG

Purification:

Affinity purification

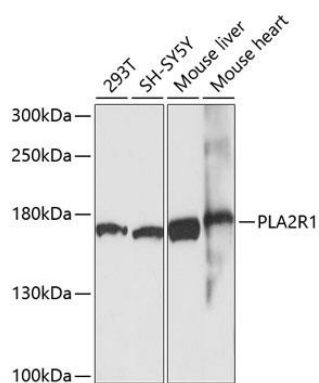
Immunogen:

Recombinant fusion protein containing a sequence corresponding to amino acids 870-1130 of human PLA2R1 (NP_031392.3).

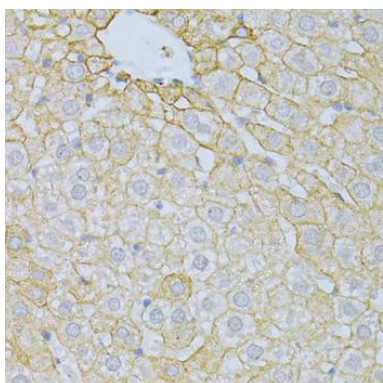
Storage:

Store at -20°C. Avoid freeze / thaw cycles. Buffer: PBS with 0.02% sodium azide, 50% glycerol, pH7.3.

Product Images



Western blot analysis of extracts of various cell lines, using PLA2R1 antibody (CAB10068) at 1:1000 dilution. Secondary antibody: HRP Goat Anti-Rabbit IgG (H+L) (CABS014) at 1:10000 dilution. Lysates/proteins: 25ug per lane. Blocking buffer: 3% nonfat dry milk in TBST. Detection: ECL Basic Kit (CABM00020). Exposure time: 90s.



Immunohistochemistry of paraffin-embedded rat liver using PLA2R1 antibody (CAB10068) at dilution of 1:100 (40x lens).