

SCN3A Rabbit Polyclonal Antibody



CAB10072

Product Information

Size:

20uL, 50uL, 100uL, 200uL

Observed MW:

350kDa

Calculated MW:

221kDa/226kDa

Applications:

WB

Reactivity:

Human

Antibody Information

Recommended dilutions:

WB 1:500 - 1:1000

Source:

Rabbit

Isotype:

IgG

Purification:

Affinity purification

Protein Background

Voltage-gated sodium channels are transmembrane glycoprotein complexes composed of a large alpha subunit with 24 transmembrane domains and one or more regulatory beta subunits. They are responsible for the generation and propagation of action potentials in neurons and muscle. This gene encodes one member of the sodium channel alpha subunit gene family, and is found in a cluster of five alpha subunit genes on chromosome 2. Multiple transcript variants encoding different isoforms have been found for this gene.

Immunogen information

Gene ID:

6328

Uniprot

Q9NY46

Synonyms:

SCN3A; NAC3; Nav1.3

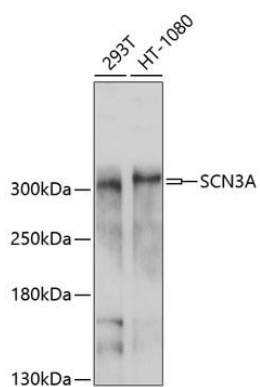
Immunogen:

Recombinant fusion protein containing a sequence corresponding to amino acids 274-400 of human SCN3A (NP_008853.3).

Storage:

Store at -20°C. Avoid freeze / thaw cycles. Buffer: PBS with 0.02% sodium azide, 50% glycerol, pH7.3.

Product Images



Western blot analysis of extracts of various cell lines, using SCN3A antibody (CAB10072) at 1:1000 dilution. Secondary antibody: HRP Goat Anti-Rabbit IgG (H+L) (CABS014) at 1:10000 dilution. Lysates/proteins: 25ug per lane. Blocking buffer: 3% nonfat dry milk in TBST. Detection: ECL Enhanced Kit (CABM00021). Exposure time: 60s.