

SLCO2B1 Rabbit Polyclonal Antibody



CAB10073

Product Information

Size:

20uL, 50uL, 100uL, 200uL

Observed MW:

76kDa

Calculated MW:

52kDa/61kDa/74kDa/76kDa

Applications:

WB

Reactivity:

Human, Mouse

Antibody Information

Recommended dilutions:

WB 1:500 - 1:2000

Source:

Rabbit

Isotype:

IgG

Purification:

Affinity purification

Protein Background

This locus encodes a member of the organic anion-transporting polypeptide family of membrane proteins. The protein encoded by this locus may function in regulation of placental uptake of sulfated steroids. Alternatively spliced transcript variants have been described.

Immunogen information

Gene ID:

11309

Uniprot

O94956

Synonyms:

SLCO2B1; OATP-B; OATP2B1; OATPB; SLC21A9

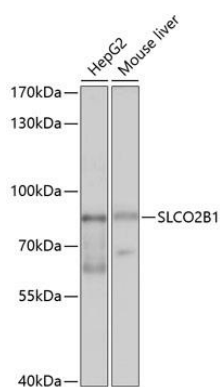
Immunogen:

Recombinant fusion protein containing a sequence corresponding to amino acids 130-210 of human SLCO2B1 (NP_009187.1).

Storage:

Store at -20°C. Avoid freeze / thaw cycles. Buffer: PBS with 0.02% sodium azide, 50% glycerol, pH7.3.

Product Images



Western blot analysis of extracts of various cell lines, using SLCO2B1 antibody (CAB10073) at 1:1000 dilution. Secondary antibody: HRP Goat Anti-Rabbit IgG (H+L) (CABS014) at 1:10000 dilution. Lysates/proteins: 25ug per lane. Blocking buffer: 3% nonfat dry milk in TBST. Detection: ECL Basic Kit (CABM00020). Exposure time: 8s.