

TRPM7 Rabbit Polyclonal Antibody



CAB10075

Product Information

Size:

20uL, 50uL, 100uL, 200uL

Observed MW:

230kDa

Calculated MW:

212kDa

Applications:

WB

Reactivity:

Mouse

Antibody Information

Recommended dilutions:

WB 1:500 - 1:2000

Source:

Rabbit

Isotype:

IgG

Purification:

Affinity purification

Protein Background

The protein encoded by this gene is both an ion channel and a serine/threonine protein kinase. The kinase activity is essential for the ion channel function, which serves to increase intracellular calcium levels and to help regulate magnesium ion homeostasis. Defects in this gene are a cause of amyotrophic lateral sclerosis-parkinsonism/dementia complex of Guam. Alternative splicing of this gene results in multiple transcript variants.

Immunogen information

Gene ID:

54822

Uniprot

Q96QT4

Synonyms:

TRPM7; ALSPDC; CHAK; CHAK1; LTRPC7; LTrpC-7; TRP-PLIK

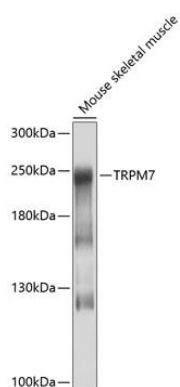
Immunogen:

Recombinant fusion protein containing a sequence corresponding to amino acids 756-855 of human TRPM7 (NP_060142.3).

Storage:

Store at -20°C. Avoid freeze / thaw cycles. Buffer: PBS with 0.02% sodium azide, 50% glycerol, pH7.3.

Product Images



Western blot analysis of extracts of mouse skeletal muscle, using TRPM7 antibody (CAB10075) at 1:1000 dilution. Secondary antibody: HRP Goat Anti-Rabbit IgG (H+L) (CABS014) at 1:10000 dilution. Lysates/proteins: 25ug per lane. Blocking buffer: 3% nonfat dry milk in TBST. Detection: ECL Basic Kit (CABM00020). Exposure time: 10s.