

GRIN3B Rabbit Polyclonal Antibody



CAB10081

Product Information

Size:

20uL, 50uL, 100uL, 200uL

Observed MW:

135kDa

Calculated MW:

112kDa

Applications:

WB

Reactivity:

Rat

Protein Background

The protein encoded by this gene is a subunit of an N-methyl-D-aspartate (NMDA) receptor. The encoded protein is found primarily in motor neurons, where it forms a heterotetramer with GRIN1 to create an excitatory glycine receptor. Variations in this gene have been proposed to be linked to schizophrenia.

Immunogen information

Gene ID:

116444

Uniprot

O60391

Synonyms:

GRIN3B; GluN3B; NR3B; NMDA 3B

Antibody Information

Recommended dilutions:

WB 1:500 - 1:1000

Source:

Rabbit

Isotype:

IgG

Purification:

Affinity purification

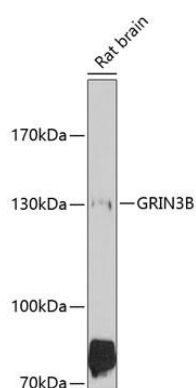
Immunogen:

Recombinant fusion protein containing a sequence corresponding to amino acids 180-410 of human GRIN3B (NP_619635.1).

Storage:

Store at -20°C. Avoid freeze / thaw cycles. Buffer: PBS with 0.02% sodium azide, 50% glycerol, pH7.3.

Product Images



Western blot analysis of extracts of rat brain, using GRIN3B antibody (CAB10081) at 1:1000 dilution. Secondary antibody: HRP Goat Anti-Rabbit IgG (H+L) (CABS014) at 1:10000 dilution. Lysates/proteins: 25ug per lane. Blocking buffer: 3% nonfat dry milk in TBST. Detection: ECL Basic Kit (CABM00020). Exposure time: 90s.