

SCN7A Rabbit Polyclonal Antibody



CAB10088

Product Information

Size:

20uL, 50uL, 100uL, 200uL

Observed MW:

260kDa

Calculated MW:

193kDa

Applications:

WB

Reactivity:

Human, Mouse

Antibody Information

Recommended dilutions:

WB 1:500 - 1:2000

Source:

Rabbit

Isotype:

IgG

Purification:

Affinity purification

Protein Background

This gene encodes one of the many voltage-gated sodium channel proteins. For proper functioning of neurons and muscles during action potentials, voltage-gated sodium channels direct sodium ion diffusion for membrane depolarization. This sodium channel protein has some atypical characteristics; the similarity between the human and mouse proteins is lower compared to other orthologous sodium channel pairs. Also, the S4 segments, which sense voltage changes, have fewer positive charged residues than in other sodium channels; domain 4 has fewer arginine and lysine residues compared to other sodium channel proteins. Several alternatively spliced transcript variants exist, but the full-length natures of all of them remain unknown.

Immunogen information

Gene ID:

6332

Uniprot

Q01118

Synonyms:

SCN7A; NaG; Nav2.1; Nav2.2; SCN6A

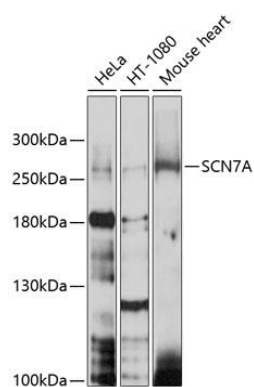
Immunogen:

Recombinant fusion protein containing a sequence corresponding to amino acids 265-368 of human SCN7A (NP_002967.2).

Storage:

Store at -20°C. Avoid freeze / thaw cycles. Buffer: PBS with 0.02% sodium azide, 50% glycerol, pH7.3.

Product Images



Western blot analysis of extracts of various cell lines, using SCN7A antibody (CAB10088) at 1:1000 dilution. Secondary antibody: HRP Goat Anti-Rabbit IgG (H+L) (CABS014) at 1:10000 dilution. Lysates/proteins: 25ug per lane. Blocking buffer: 3% nonfat dry milk in TBST. Detection: ECL Basic Kit (CABM00020). Exposure time: 10s.