

PAX8 Rabbit Polyclonal Antibody



CAB1009

Product Information

Size:

20uL, 50uL, 100uL, 200uL

Observed MW:

51kDa

Calculated MW:

31kDa/34kDa/41kDa/43kDa/
48kDa

Applications:

WB IF

Reactivity:

Human

Protein Background

This gene encodes a member of the paired box (PAX) family of transcription factors. Members of this gene family typically encode proteins that contain a paired box domain, an octapeptide, and a paired-type homeodomain. This nuclear protein is involved in thyroid follicular cell development and expression of thyroid-specific genes. Mutations in this gene have been associated with thyroid dysgenesis, thyroid follicular carcinomas and atypical follicular thyroid adenomas. Alternatively spliced transcript variants encoding different isoforms have been described.

Immunogen information

Gene ID:

7849

Uniprot

Q06710

Synonyms:

PAX8

Antibody Information

Recommended dilutions:

WB 1:500 - 1:2000 IF 1:50 -
1:200

Source:

Rabbit

Isotype:

IgG

Purification:

Affinity purification

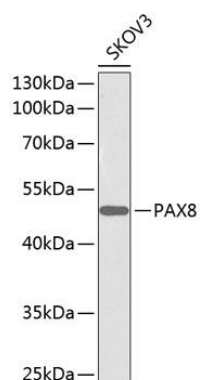
Immunogen:

Recombinant fusion protein containing a sequence corresponding to amino acids 1-212 of human PAX8 (NP_003457.1).

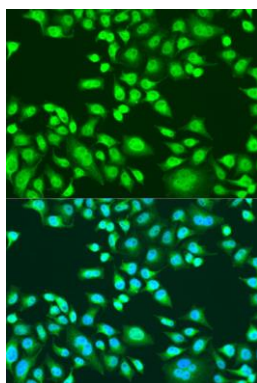
Storage:

Store at -20°C. Avoid freeze / thaw cycles. Buffer: PBS with 0.02% sodium azide, 50% glycerol, pH7.3.

Product Images



Western blot analysis of extracts of SKOV3 cells, using PAX8 antibody (CAB1009). Secondary antibody: HRP Goat Anti-Rabbit IgG (H+L) (CABS014) at 1:10000 dilution. Lysates/proteins: 25ug per lane. Blocking buffer: 3% nonfat dry milk in TBST.



Immunofluorescence analysis of U2OS cells using PAX8 antibody (CAB1009) at dilution of 1:100. Blue: DAPI for nuclear staining.