

# Beta-Tubulin Rabbit Polyclonal Antibody



**CAB1010**

---

## Product Information

### Size:

20uL, 50uL, 100uL, 200uL

### Observed MW:

50kDa

### Calculated MW:

50kDa

### Applications:

WB

### Reactivity:

Human, Mouse, Rat

## Antibody Information

### Recommended dilutions:

WB 1:500 - 1:2000

### Source:

Rabbit

### Isotype:

IgG

### Purification:

Affinity purification

## Protein Background

This gene encodes a beta tubulin protein. This protein forms a dimer with alpha tubulin and acts as a structural component of microtubules. Mutations in this gene cause cortical dysplasia, complex, with other brain malformations 6. Alternative splicing results in multiple splice variants. There are multiple pseudogenes for this gene on chromosomes 1, 6, 7, 8, 9, and 13.

## Immunogen information

### Gene ID:

203068

### Uniprot

P07437

### Synonyms:

CDCBM6; CSCSC1; M40; OK/SW-cl.56; TUBB1; TUBB5; Beta Tubulin; TUBB; Beta-Tubulin

### Immunogen:

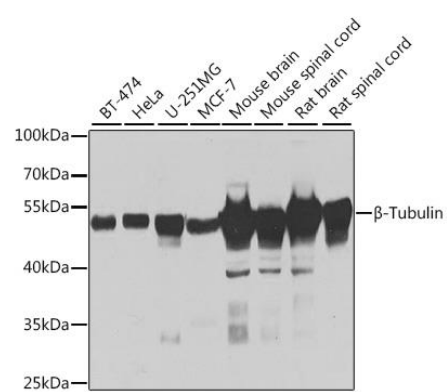
Recombinant fusion protein containing a sequence corresponding to amino acids 40-260 of human Beta-Tubulin (NP\_006077.2).

### Storage:

Store at -20°C. Avoid freeze / thaw cycles. Buffer: PBS with 0.02% sodium azide, 50% glycerol, pH7.3.

## Product Images

---



Western blot - Beta-Tubulin Rabbit pAb (CAB1010)