

Beclin 1 Mouse Monoclonal Antibody



CAB10101

Product Information

Size:

50uL, 100uL, 200uL

Observed MW:

60kDa

Calculated MW:

51kDa

Applications:

WB

Reactivity:

Human, Mouse, Rat,
Hamster, Monkey

Antibody Information

Recommended dilutions:

WB 1:200 - 1:1000

Source:

Mouse

Isotype:

IgG

Purification:

Affinity purification

Protein Background

This gene encodes a protein that regulates autophagy, a catabolic process of degradation induced by starvation. The encoded protein is a component of the phosphatidylinositol-3-kinase (PI3K) complex which mediates vesicle-trafficking processes. This protein is thought to play a role in multiple cellular processes, including tumorigenesis, neurodegeneration and apoptosis. Alternative splicing results in multiple transcript variants.

Immunogen information

Gene ID:

8678

Uniprot

Q14457

Synonyms:

ATG6; VPS30; beclin1; Beclin 1; BECN1; beclin-1

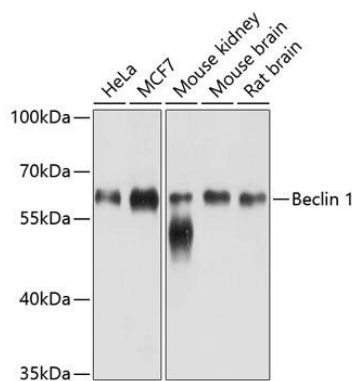
Immunogen:

Recombinant protein of human Beclin 1

Storage:

Store at -20°C. Avoid freeze / thaw cycles. Buffer: PBS with 0.02% sodium azide, 50% glycerol, pH7.3.

Product Images



Western blot analysis of extracts of various cell lines, using Beclin 1 antibody (CAB10101) at 1:1000 dilution. Secondary antibody: HRP Goat Anti-Mouse IgG (H+L) (CABS003) at 1:10000 dilution. Lysates/proteins: 25ug per lane. Blocking buffer: 3% nonfat dry milk in TBST. Detection: ECL Enhanced Kit (CABM00021). Exposure time: 90s.