

RPRD1B Rabbit Polyclonal Antibody



CAB10102

Product Information

Size:

20uL, 50uL, 100uL, 200uL

Observed MW:

37kDa

Calculated MW:

36kDa

Applications:

WB IHC

Reactivity:

Human, Mouse, Rat

Protein Background

Immunogen information

Gene ID:

58490

Uniprot

Q9NQG5

Synonyms:

RPRD1B; C20orf77; CREPT; NET60; dJ1057B20.2; K-H; Kub5-Hera; rprd1b

Immunogen:

Recombinant protein of human rprd1b

Antibody Information

Recommended dilutions:

WB 1:500 - 1:2000 IHC

1:100 - 1:200

Source:

Rabbit

Isotype:

IgG

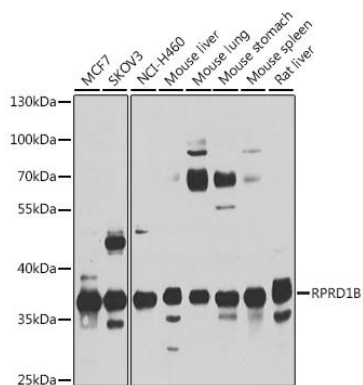
Purification:

Affinity purification

Storage:

Store at -20°C. Avoid freeze / thaw cycles. Buffer: PBS with 0.02% sodium azide, 50% glycerol, pH7.3.

Product Images



Western blot analysis of extracts of various cell lines, using rprd1b antibody (CAB10102) at 1:1000 dilution. Secondary antibody: HRP Goat Anti-Rabbit IgG (H+L) (CABS014) at 1:10000 dilution. Lysates/proteins: 25ug per lane. Blocking buffer: 3% nonfat dry milk in TBST. Detection: ECL Basic Kit (CABM00020). Exposure time: 15s.