

# ATP4B Rabbit Polyclonal Antibody



CAB10106

## Product Information

### Size:

20uL, 50uL, 100uL, 200uL

### Observed MW:

35kDa

### Calculated MW:

33kDa

### Applications:

WB IHC

### Reactivity:

Human, Mouse, Rat

## Protein Background

The protein encoded by this gene belongs to a family of P-type cation-transporting ATPases. The gastric H<sup>+</sup>, K<sup>+</sup>-ATPase is a heterodimer consisting of a high molecular weight catalytic alpha subunit and a smaller but heavily glycosylated beta subunit. This enzyme is a proton pump that catalyzes the hydrolysis of ATP coupled with the exchange of H<sup>(+)</sup> and K<sup>(+)</sup> ions across the plasma membrane. It is also responsible for gastric acid secretion. This gene encodes the beta subunit of the gastric H<sup>+</sup>, K<sup>+</sup>-ATPase.

## Immunogen information

### Gene ID:

496

### Uniprot

P51164

### Synonyms:

ATP4B; ATP6B

## Antibody Information

### Recommended dilutions:

WB 1:500 - 1:2000 IHC 1:50  
- 1:200

### Source:

Rabbit

### Isotype:

IgG

### Purification:

Affinity purification

### Immunogen:

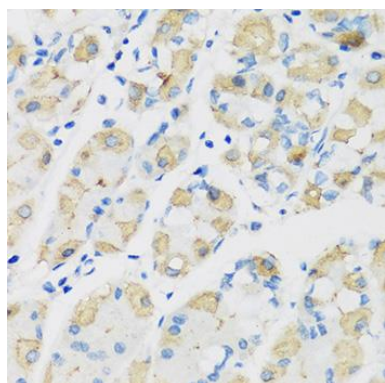
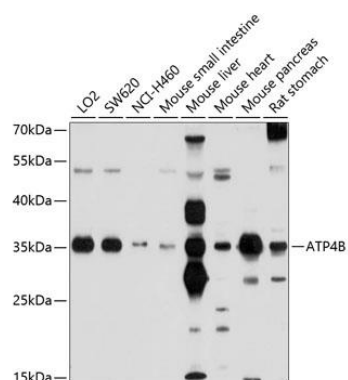
Recombinant fusion protein containing a sequence corresponding to amino acids 62-291 of human ATP4B (NP\_000696.1).

### Storage:

Store at -20°C. Avoid freeze / thaw cycles. Buffer: PBS with 0.02% sodium azide, 50% glycerol, pH7.3.

## Product Images

---



Western blot analysis of extracts of various cell lines, using ATP4B antibody (CAB10106) at 1:1000 dilution. Secondary antibody: HRP Goat Anti-Rabbit IgG (H+L) (CABS014) at 1:10000 dilution. Lysates/proteins: 25ug per lane. Blocking buffer: 3% nonfat dry milk in TBST. Detection: ECL Basic Kit (CABM00020). Exposure time: 30s.

Immunohistochemistry of paraffin-embedded human stomach using ATP4B antibody (CAB10106) at dilution of 1:100 (40x lens).