

BTN1A1 Rabbit Polyclonal Antibody



CAB10107

Product Information

Size:

20uL, 50uL, 100uL, 200uL

Observed MW:

59kDa

Calculated MW:

58kDa

Applications:

WB

Reactivity:

Mouse, Rat

Protein Background

Butyrophilin is the major protein associated with fat droplets in the milk. It is a member of the immunoglobulin superfamily. It may have a cell surface receptor function. The human butyrophilin gene is localized in the major histocompatibility complex (MHC) class I region of 6p and may have arisen relatively recently in evolution by the shuffling of exons between 2 ancestral gene families

Immunogen information

Gene ID:

696

Uniprot

Q13410

Synonyms:

BTN1A1; BT; BTN; BTN1

Antibody Information

Recommended dilutions:

WB 1:500 - 1:2000

Source:

Rabbit

Isotype:

IgG

Purification:

Affinity purification

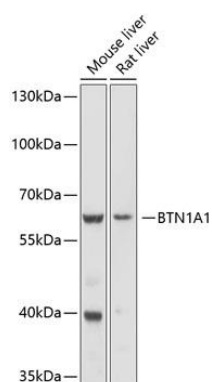
Immunogen:

Recombinant fusion protein containing a sequence corresponding to amino acids 27-210 of human BTN1A1 (NP_001723.2).

Storage:

Store at -20°C. Avoid freeze / thaw cycles. Buffer: PBS with 0.02% sodium azide, 50% glycerol, pH7.3.

Product Images



Western blot analysis of extracts of various cell lines, using BTN1A1 antibody (CAB10107) at 1:1000 dilution. Secondary antibody: HRP Goat Anti-Rabbit IgG (H+L) (CABS014) at 1:10000 dilution. Lysates/proteins: 25ug per lane. Blocking buffer: 3% nonfat dry milk in TBST. Detection: ECL Basic Kit (CABM00020). Exposure time: 10s.