

alpha smooth muscle actin Rabbit Polyclonal Antibody

CAB1011



Product Information

Size:

20uL, 50uL, 100uL, 200uL

Observed MW:

42kDa

Calculated MW:

42kDa

Applications:

WB IHC IF

Reactivity:

Human, Mouse, Rat

Protein Background

The protein encoded by this gene belongs to the actin family of proteins, which are highly conserved proteins that play a role in cell motility, structure and integrity. Alpha, beta and gamma actin isoforms have been identified, with alpha actins being a major constituent of the contractile apparatus, while beta and gamma actins are involved in the regulation of cell motility. This actin is an alpha actin that is found in skeletal muscle. Defects in this gene cause aortic aneurysm familial thoracic type 6. Multiple alternatively spliced variants, encoding the same protein, have been identified.

Immunogen information

Gene ID:

59

Uniprot

P62736

Synonyms:

AAT6; ACTSA; MYMY5; ACTA2; actin

Antibody Information

Recommended dilutions:

WB 1:500 - 1:1000 IHC 1:50
- 1:100 IF 1:100 - 1:200

Source:

Rabbit

Isotype:

IgG

Purification:

Affinity purification

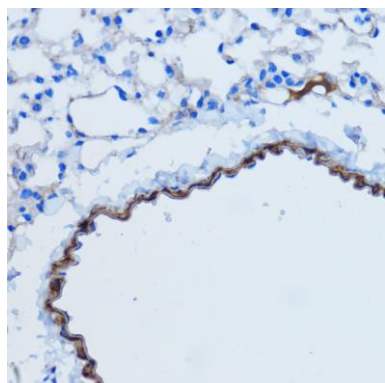
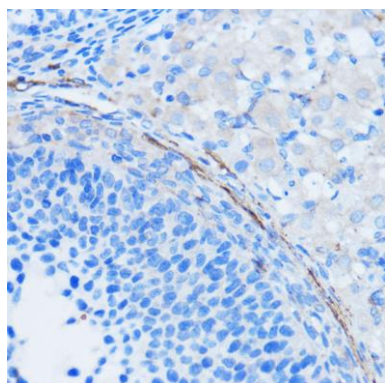
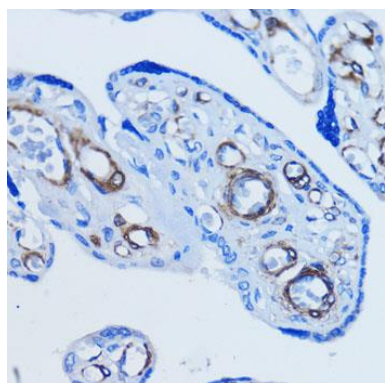
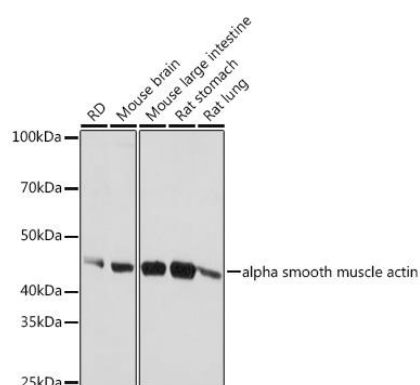
Immunogen:

Recombinant fusion protein containing a sequence corresponding to amino acids 1-124 of human alpha smooth muscle actin (NP_001135417.1).

Storage:

Store at -20°C. Avoid freeze / thaw cycles. Buffer: PBS with 0.02% sodium azide, 50% glycerol, pH7.3.

Product Images



Western blot analysis of extracts of various cell lines, using alpha smooth muscle actin antibody (CAB1011) at 1:500 dilution. Secondary antibody: HRP Goat Anti-Rabbit IgG (H+L) (CABS014) at 1:10000 dilution. Lysates/proteins: 25ug per lane. Blocking buffer: 3% nonfat dry milk in TBST. Detection: ECL Basic Kit (CABM00020). Exposure time: 1s.

Immunohistochemistry of paraffin-embedded human placenta using alpha smooth muscle actin antibody (CAB1011) at dilution of 1:100 (40x lens).

Immunohistochemistry of paraffin-embedded rat ovary using alpha smooth muscle actin antibody (CAB1011) at dilution of 1:100 (40x lens).

Immunohistochemistry of paraffin-embedded mouse lung using alpha smooth muscle actin antibody (CAB1011) at dilution of 1:100 (40x lens).