

GABRR2 Rabbit Polyclonal Antibody



CAB10111

Product Information

Size:

20uL, 50uL, 100uL, 200uL

Observed MW:

65kDa

Calculated MW:

54kDa/56kDa

Applications:

WB

Reactivity:

Human, Mouse

Antibody Information

Recommended dilutions:

WB 1:500 - 1:2000

Source:

Rabbit

Isotype:

IgG

Purification:

Affinity purification

Protein Background

Gamma-aminobutyric acid (GABA) is the major inhibitory neurotransmitter in the mammalian brain where it acts at GABA receptors, which are ligand-gated chloride channels. The protein encoded by this gene is a member of the rho subunit family and is a component of the GABA type A receptor complex. This gene exists on chromosome 6q next to the gene encoding the rho 1 subunit of the GABA type A receptor, in a region thought to be associated with susceptibility for psychiatric disorders and epilepsy. Polymorphisms in this gene may also be associated with alcohol dependence, and general cognitive ability.

Immunogen information

Gene ID:

2570

Uniprot

P28476

Synonyms:

GABRR2

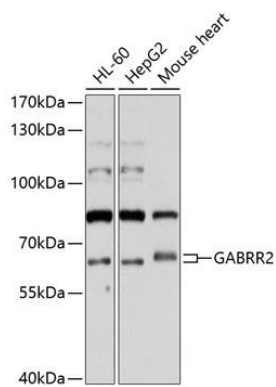
Immunogen:

Recombinant fusion protein containing a sequence corresponding to amino acids 350-450 of human GABRR2 (NP_002034.3).

Storage:

Store at -20°C. Avoid freeze / thaw cycles. Buffer: PBS with 0.02% sodium azide, 50% glycerol, pH7.3.

Product Images



Western blot analysis of extracts of various cell lines, using GABRR2 antibody (CAB10111) at 1:1000 dilution. Secondary antibody: HRP Goat Anti-Rabbit IgG (H+L) (CABS014) at 1:10000 dilution. Lysates/proteins: 25ug per lane. Blocking buffer: 3% nonfat dry milk in TBST. Detection: ECL Basic Kit (CABM00020). Exposure time: 30s.