

# NDUFA10 Rabbit Polyclonal Antibody



CAB10123

## Product Information

### Size:

20uL, 50uL, 100uL, 200uL

### Observed MW:

38-42kDa

### Calculated MW:

40kDa/48kDa

### Applications:

WB

### Reactivity:

Human, Mouse, Rat

## Protein Background

The protein encoded by this gene is a component of 42 kDa complex I, the first enzyme complex in the electron transport chain of mitochondria. This protein has NADH dehydrogenase activity and oxidoreductase activity. It transfers electrons from NADH to the respiratory chain. A mutation in this gene was found in an individual with Leigh syndrome.

## Immunogen information

### Gene ID:

4705

### Uniprot

O95299

### Synonyms:

NDUFA10; CI-42KD; CI-42k

## Antibody Information

### Recommended dilutions:

WB 1:1000 - 1:4000

### Source:

Rabbit

### Isotype:

IgG

### Purification:

Affinity purification

### Immunogen:

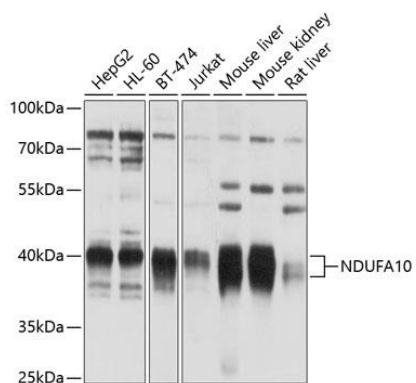
Recombinant fusion protein containing a sequence corresponding to amino acids 36-300 of human NDUFA10 (NP\_004535.1).

### Storage:

Store at -20°C. Avoid freeze / thaw cycles. Buffer: PBS with 0.02% sodium azide, 50% glycerol, pH7.3.

## Product Images

---



Western blot analysis of extracts of various cell lines, using NDUFA10 antibody (CAB10123) at 1:1000 dilution. Secondary antibody: HRP Goat Anti-Rabbit IgG (H+L) (CABS014) at 1:10000 dilution. Lysates/proteins: 25ug per lane. Blocking buffer: 3% nonfat dry milk in TBST. Detection: ECL Basic Kit (CABM00020). Exposure time: 30s.