

ZP2 Rabbit Polyclonal Antibody



CAB10126

Product Information

Size:

20uL, 50uL, 100uL, 200uL

Observed MW:

68kDa

Calculated MW:

81kDa/82kDa

Applications:

WB IF

Reactivity:

Human, Mouse, Rat

Protein Background

The zona pellucida is an extracellular matrix that surrounds the oocyte and early embryo. It is composed of three glycoproteins with various functions during fertilization and preimplantation development. The glycosylated mature peptide is one of the structural components of the zona pellucida and functions in secondary binding and penetration of acrosome-reacted spermatozoa. Female mice lacking this gene do not form a stable zona matrix and are sterile. Alternative splicing results in multiple transcript variants.

Immunogen information

Gene ID:

7783

Uniprot

Q05996

Synonyms:

ZP2; ZPA; Zp-2

Antibody Information

Recommended dilutions:

WB 1:1000 - 1:4000 IF 1:50 - 1:200

Source:

Rabbit

Isotype:

IgG

Purification:

Affinity purification

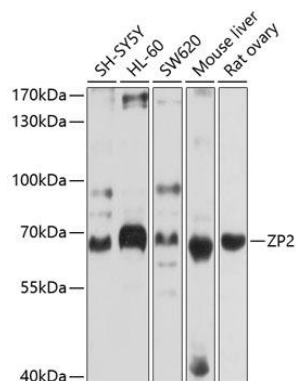
Immunogen:

Recombinant fusion protein containing a sequence corresponding to amino acids 651-745 of human ZP2 (NP_003451.1).

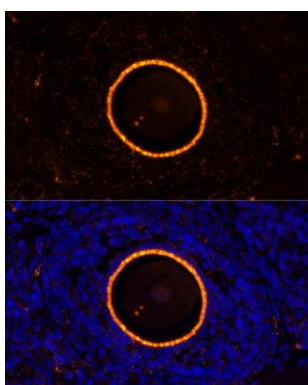
Storage:

Store at -20°C. Avoid freeze / thaw cycles. Buffer: PBS with 0.02% sodium azide, 50% glycerol, pH7.3.

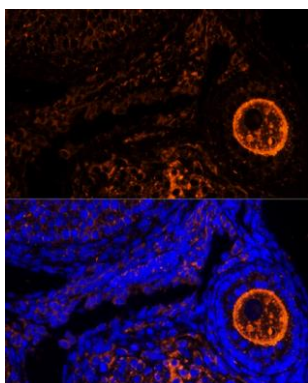
Product Images



Western blot analysis of extracts of various cell lines, using ZP2 antibody (CAB10126) at 1:1000 dilution. Secondary antibody: HRP Goat Anti-Rabbit IgG (H+L) (CABS014) at 1:10000 dilution. Lysates/proteins: 25ug per lane. Blocking buffer: 3% nonfat dry milk in TBST. Detection: ECL Basic Kit (CABM00020). Exposure time: 10s.



Immunofluorescence analysis of rat oophoroma cells using ZP2 antibody (CAB10126) at dilution of 1:100. Blue: DAPI for nuclear staining.



Immunofluorescence analysis of mouse oophoroma cells using ZP2 antibody (CAB10126) at dilution of 1:100. Blue: DAPI for nuclear staining.