

# CKII Alpha Rabbit Polyclonal Antibody



CAB1014

## Product Information

### Size:

20uL, 50uL, 100uL, 200uL

### Observed MW:

45kDa

### Calculated MW:

29kDa/45kDa

### Applications:

WB IHC IF

### Reactivity:

Human, Mouse, Rat

## Antibody Information

### Recommended dilutions:

WB 1:1000 - 1:4000 IHC  
1:50 - 1:200 IF 1:50 - 1:100

### Source:

Rabbit

### Isotype:

IgG

### Purification:

Affinity purification

## Protein Background

Casein kinase II is a serine/threonine protein kinase that phosphorylates acidic proteins such as casein. It is involved in various cellular processes, including cell cycle control, apoptosis, and circadian rhythm. The kinase exists as a tetramer and is composed of an alpha, an alpha-prime, and two beta subunits. The alpha subunits contain the catalytic activity while the beta subunits undergo autophosphorylation. The protein encoded by this gene represents the alpha subunit. While this gene is found on chromosome 20, a related transcribed pseudogene is found on chromosome 11. Three transcript variants encoding two different proteins have been found for this gene.

## Immunogen information

### Gene ID:

1457

### Uniprot

P68400

### Synonyms:

CK2A1; CKII; CSNK2A3; OCNDS; CKII alpha; CSNK2A1; Cka1; Cka2

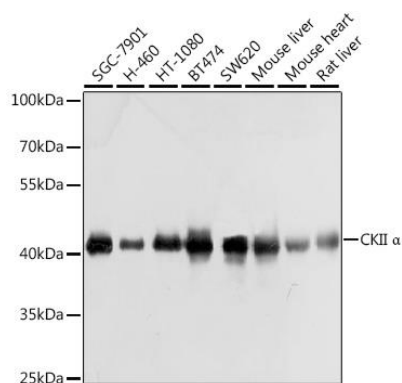
### Immunogen:

Recombinant fusion protein containing a sequence corresponding to amino acids 1-391 of human CKII Alpha (NP\_001886.1).

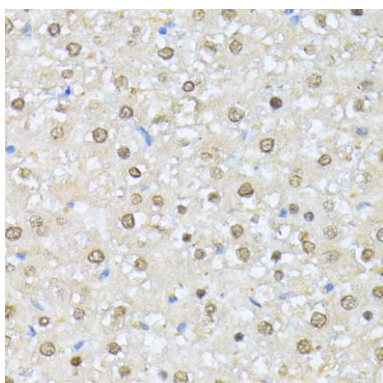
### Storage:

Store at -20°C. Avoid freeze / thaw cycles. Buffer: PBS with 0.02% sodium azide, 50% glycerol, pH7.3.

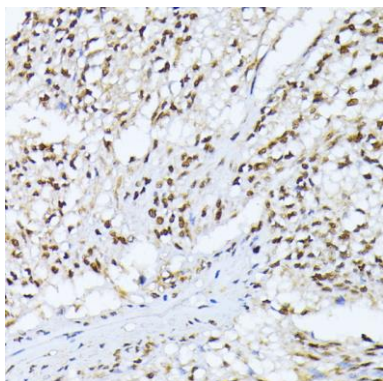
## Product Images



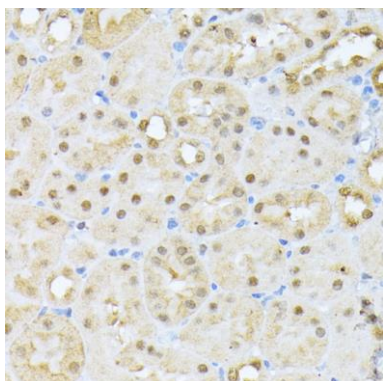
Western blot analysis of extracts of various cell lines, using CKII alpha antibody (CAB1014) at 1:1000 dilution. Secondary antibody: HRP Goat Anti-Rabbit IgG (H+L) (CABS014) at 1:10000 dilution. Lysates/proteins: 25ug per lane. Blocking buffer: 3% nonfat dry milk in TBST. Detection: ECL Basic Kit (CABM00020). Exposure time: 1s.



Immunohistochemistry of paraffin-embedded rat liver using CKII alpha antibody (CAB1014) at dilution of 1:100 (40x lens).



Immunohistochemistry of paraffin-embedded human gastric cancer using CKII alpha antibody (CAB1014) at dilution of 1:100 (40x lens).



Immunohistochemistry of paraffin-embedded mouse kidney using CKII alpha antibody (CAB1014) at dilution of 1:100 (40x lens).