

CLUH Rabbit Polyclonal Antibody



CAB10140

Product Information

Size:

20uL, 50uL, 100uL, 200uL

Observed MW:

180kDa

Calculated MW:

146kDa

Applications:

WB IHC IF

Reactivity:

Human, Mouse

Antibody Information

Recommended dilutions:

WB 1:1000 - 1:4000 IHC
1:50 - 1:200 IF 1:50 - 1:200

Source:

Rabbit

Isotype:

IgG

Purification:

Affinity purification

Protein Background

Immunogen information

Gene ID:

23277

Uniprot

O75153

Synonyms:

CLUH; CLU1; KIAA0664

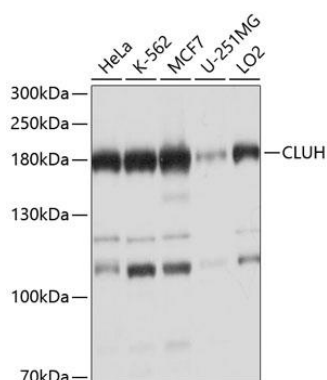
Immunogen:

Recombinant fusion protein containing a sequence corresponding to amino acids 1120-1309 of human CLUH (NP_056044.3).

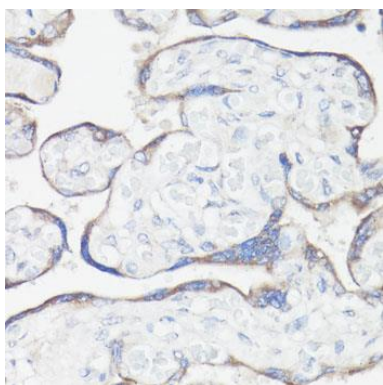
Storage:

Store at -20°C. Avoid freeze / thaw cycles. Buffer: PBS with 0.02% sodium azide, 50% glycerol, pH7.3.

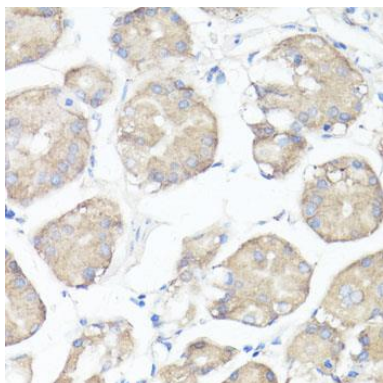
Product Images



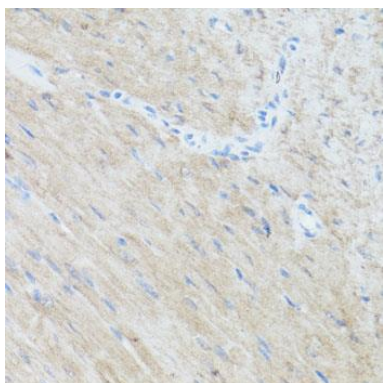
Western blot analysis of extracts of various cell lines, using CLUH antibody (CAB10140) at 1:1000 dilution. Secondary antibody: HRP Goat Anti-Rabbit IgG (H+L) (CABS014) at 1:10000 dilution. Lysates/proteins: 25ug per lane. Blocking buffer: 3% nonfat dry milk in TBST. Detection: ECL Basic Kit (CABM00020). Exposure time: 15s.



Immunohistochemistry of paraffin-embedded human placenta using CLUH antibody (CAB10140) at dilution of 1:100 (40x lens).



Immunohistochemistry of paraffin-embedded human stomach using CLUH antibody (CAB10140) at dilution of 1:100 (40x lens).



Immunohistochemistry of paraffin-embedded mouse heart using CLUH antibody (CAB10140) at dilution of 1:100 (40x lens).