

SMG6 Rabbit Polyclonal Antibody



CAB10141

Product Information

Size:

20uL, 50uL, 100uL, 200uL

Observed MW:

210kDa

Calculated MW:

37kDa/57kDa/160kDa

Applications:

WB

Reactivity:

Human, Rat

Protein Background

This gene encodes a component of the telomerase ribonucleoprotein complex responsible for the replication and maintenance of chromosome ends. The encoded protein also plays a role in the nonsense-mediated mRNA decay (NMD) pathway, providing the endonuclease activity near the premature translation termination codon that is needed to initiate NMD. Alternatively spliced transcript variants encoding distinct protein isoforms have been described.

Immunogen information

Gene ID:

23293

Uniprot

Q86US8

Synonyms:

SMG6; C17orf31; EST1A; SMG-6; hSMG5/7a

Antibody Information

Recommended dilutions:

WB 1:500 - 1:2000

Source:

Rabbit

Isotype:

IgG

Purification:

Affinity purification

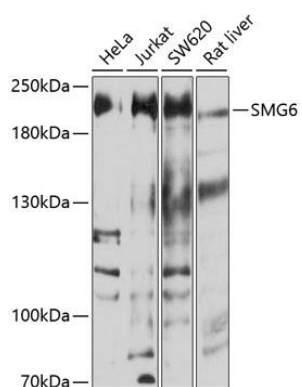
Immunogen:

Recombinant fusion protein containing a sequence corresponding to amino acids 1160-1419 of human SMG6 (NP_060045.4).

Storage:

Store at -20°C. Avoid freeze / thaw cycles. Buffer: PBS with 0.02% sodium azide, 50% glycerol, pH7.3.

Product Images



Western blot analysis of extracts of various cell lines, using SMG6 antibody (CAB10141) at 1:1000 dilution. Secondary antibody: HRP Goat Anti-Rabbit IgG (H+L) (CABS014) at 1:10000 dilution. Lysates/proteins: 25ug per lane. Blocking buffer: 3% nonfat dry milk in TBST. Detection: ECL Basic Kit (CABM00020). Exposure time: 30s.