

# CECR2 Rabbit Polyclonal Antibody



CAB10143

---

## Product Information

### Size:

20uL, 50uL, 100uL, 200uL

### Observed MW:

164kDa

### Calculated MW:

58kDa/162kDa/164kDa

### Applications:

WB

### Reactivity:

Mouse, Rat

## Protein Background

This gene encodes a bromodomain-containing protein that is involved in chromatin remodeling, and may additionally play a role in DNA damage response. The encoded protein functions as part of an ATP-dependent complex that is involved in neurulation. This gene is a candidate gene for Cat Eye Syndrome. Alternative splicing results in multiple transcript variants.

## Immunogen information

### Gene ID:

27443

### Uniprot

Q9BXF3

### Synonyms:

CECR2

## Antibody Information

### Recommended dilutions:

WB 1:200 - 1:1000

### Source:

Rabbit

### Isotype:

IgG

### Purification:

Affinity purification

### Immunogen:

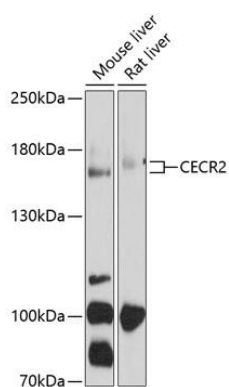
Recombinant fusion protein containing a sequence corresponding to amino acids 170-370 of human CECR2 (NP\_113601.2).

### Storage:

Store at -20°C. Avoid freeze / thaw cycles. Buffer: PBS with 0.02% sodium azide, 50% glycerol, pH7.3.

## Product Images

---



Western blot analysis of extracts of various cell lines, using CECR2 antibody (CAB10143) at 1:1000 dilution. Secondary antibody: HRP Goat Anti-Rabbit IgG (H+L) (CABS014) at 1:10000 dilution. Lysates/proteins: 25ug per lane. Blocking buffer: 3% nonfat dry milk in TBST. Detection: ECL Enhanced Kit (CABM00021). Exposure time: 60s.