

TRPM4 Rabbit Polyclonal Antibody



CAB10146

Product Information

Size:

20uL, 50uL, 100uL, 200uL

Observed MW:

150kDa

Calculated MW:

115kDa/118kDa/134kDa

Applications:

WB IHC

Reactivity:

Human, Mouse

Protein Background

The protein encoded by this gene is a calcium-activated nonselective ion channel that mediates transport of monovalent cations across membranes, thereby depolarizing the membrane. The activity of the encoded protein increases with increasing intracellular calcium concentration, but this channel does not transport calcium.

Immunogen information

Gene ID:

54795

Uniprot

Q8TD43

Synonyms:

TRPM4; LTrpC4; PFHB1B; TRPM4B; hTRPM4

Antibody Information

Recommended dilutions:

WB 1:200 - 1:1000 IHC 1:20
- 1:100

Source:

Rabbit

Isotype:

IgG

Purification:

Affinity purification

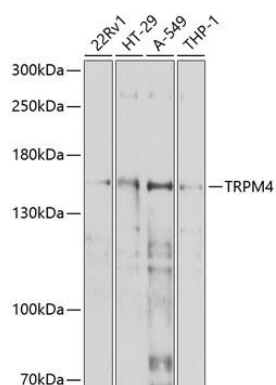
Immunogen:

Recombinant fusion protein containing a sequence corresponding to amino acids 1-240 of human TRPM4 (NP_060106.2).

Storage:

Store at -20°C. Avoid freeze / thaw cycles. Buffer: PBS with 0.02% sodium azide, 50% glycerol, pH7.3.

Product Images



Western blot analysis of extracts of various cell lines, using TRPM4 antibody (CAB10146) at 1:1000 dilution. Secondary antibody: HRP Goat Anti-Rabbit IgG (H+L) (CABS014) at 1:10000 dilution. Lysates/proteins: 25ug per lane. Blocking buffer: 3% nonfat dry milk in TBST. Detection: ECL Basic Kit (CABM00020). Exposure time: 45s.