

TAS1R1 Rabbit Polyclonal Antibody



CAB10156

Product Information

Size:

20uL, 50uL, 100uL, 200uL

Observed MW:

110kDa

Calculated MW:

35kDa/52kDa/65kDa/93kDa

Applications:

WB

Reactivity:

Human, Mouse, Rat

Protein Background

The protein encoded by this gene is a G protein-coupled receptor and is a component of the heterodimeric amino acid taste receptor T1R1+3. The T1R1+3 receptor responds to L-amino acids but not to D-enantiomers or other compounds. Most amino acids that are perceived as sweet activate T1R1+3, and this activation is strictly dependent on an intact T1R1+3 heterodimer. Multiple transcript variants encoding different isoforms have been found for this gene.

Immunogen information

Gene ID:

80835

Uniprot

Q7RTX1

Synonyms:

TAS1R1; GM148; GPR70; T1R1; TR1

Antibody Information

Recommended dilutions:

WB 1:1000 - 1:4000

Source:

Rabbit

Isotype:

IgG

Purification:

Affinity purification

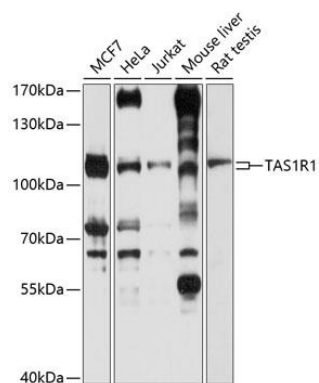
Immunogen:

Recombinant fusion protein containing a sequence corresponding to amino acids 330-567 of human TAS1R1 (NP_619642.2).

Storage:

Store at -20°C. Avoid freeze / thaw cycles. Buffer: PBS with 0.02% sodium azide, 50% glycerol, pH7.3.

Product Images



Western blot analysis of extracts of various cell lines, using TAS1R1 antibody (CAB10156) at 1:1000 dilution. Secondary antibody: HRP Goat Anti-Rabbit IgG (H+L) (CABS014) at 1:10000 dilution. Lysates/proteins: 25ug per lane. Blocking buffer: 3% nonfat dry milk in TBST. Detection: ECL Basic Kit (CABM00020). Exposure time: 5s.