

GFM2 Rabbit Polyclonal Antibody



CAB10158

Product Information

Size:

20uL, 50uL, 100uL, 200uL

Observed MW:

86kDa

Calculated MW:

57kDa/67kDa/81kDa/86kDa

Applications:

WB

Reactivity:

Human, Mouse, Rat

Antibody Information

Recommended dilutions:

WB 1:1000 - 1:4000

Source:

Rabbit

Isotype:

IgG

Purification:

Affinity purification

Protein Background

Eukaryotes contain two protein translational systems, one in the cytoplasm and one in the mitochondria. Mitochondrial translation is crucial for maintaining mitochondrial function and mutations in this system lead to a breakdown in the respiratory chain-oxidative phosphorylation system and to impaired maintenance of mitochondrial DNA. This gene encodes one of the mitochondrial translation elongation factors, which is a GTPase that plays a role at the termination of mitochondrial translation by mediating the disassembly of ribosomes from messenger RNA. Its role in the regulation of normal mitochondrial function and in disease states attributed to mitochondrial dysfunction is not known. Alternative splicing results in multiple transcript variants encoding distinct isoforms.

Immunogen information

Gene ID:

84340

Uniprot

Q969S9

Synonyms:

GFM2; EF-G2mt; EFG2; MRRF2; MST027; MSTP027; RRF2; RRF2mt; hEFG2; mEF-G 2; mEF-G2

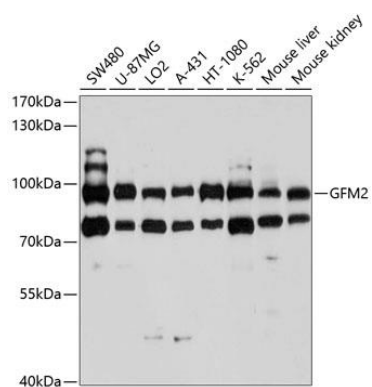
Immunogen:

Recombinant fusion protein containing a sequence corresponding to amino acids 520-779 of human GFM2 (NP_115756.2).

Storage:

Store at -20°C. Avoid freeze / thaw cycles. Buffer: PBS with 0.02% sodium azide, 50% glycerol, pH7.3.

Product Images



Western blot analysis of extracts of various cell lines, using GFM2 antibody (CAB10158) at 1:1000 dilution. Secondary antibody: HRP Goat Anti-Rabbit IgG (H+L) (CABS014) at 1:10000 dilution. Lysates/proteins: 25ug per lane. Blocking buffer: 3% nonfat dry milk in TBST. Detection: ECL Basic Kit (CABM00020). Exposure time: 10s.