

ARMS2 Rabbit Polyclonal Antibody



CAB10161

Product Information

Size:

20uL, 50uL, 100uL, 200uL

Observed MW:

11kDa

Calculated MW:

11kDa

Applications:

WB

Reactivity:

Mouse

Antibody Information

Recommended dilutions:

WB 1:200 - 1:1000

Source:

Rabbit

Isotype:

IgG

Purification:

Affinity purification

Protein Background

This gene encodes a protein that is thought to play a role in diseases in the elderly. Mutations in this gene have been associated with age-related macular degeneration.

Immunogen information

Gene ID:

387715

Uniprot

POC7Q2

Synonyms:

ARMS2; ARMD8

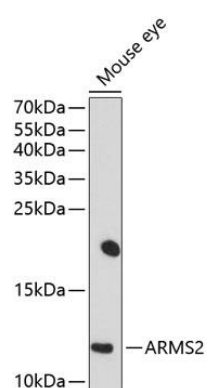
Immunogen:

Recombinant fusion protein containing a sequence corresponding to amino acids 1-107 of human ARMS2 (NP_001093137.1).

Storage:

Store at -20°C. Avoid freeze / thaw cycles. Buffer: PBS with 0.02% sodium azide, 50% glycerol, pH7.3.

Product Images



Western blot analysis of extracts of mouse eye, using ARMS2 antibody (CAB10161) at 1:1000 dilution. Secondary antibody: HRP Goat Anti-Rabbit IgG (H+L) (CABS014) at 1:10000 dilution. Lysates/proteins: 25ug per lane. Blocking buffer: 3% nonfat dry milk in TBST. Detection: ECL Basic Kit (CABM00020). Exposure time: 90s.