

# C6 Rabbit Polyclonal Antibody



**CAB10170**

---

## Product Information

### Size:

20uL, 50uL, 100uL, 200uL

### Observed MW:

110kDa

### Calculated MW:

104kDa

### Applications:

WB

### Reactivity:

Mouse

## Protein Background

This gene encodes a component of the complement cascade. The encoded protein is part of the membrane attack complex that can be incorporated into the cell membrane and cause cell lysis. Mutations in this gene are associated with complement component-6 deficiency. Transcript variants encoding the same protein have been described.

## Immunogen information

### Gene ID:

729

### Uniprot

P13671

### Synonyms:

C6

## Antibody Information

### Recommended dilutions:

WB 1:500 - 1:2000

### Source:

Rabbit

### Isotype:

IgG

### Purification:

Affinity purification

### Immunogen:

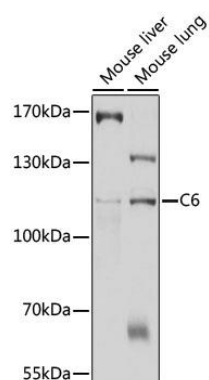
Recombinant fusion protein containing a sequence corresponding to amino acids 22-260 of human C6 (NP\_000056.2).

### Storage:

Store at -20°C. Avoid freeze / thaw cycles. Buffer: PBS with 0.02% sodium azide, 50% glycerol, pH7.3.

## Product Images

---



Western blot analysis of extracts of various cell lines, using C6 antibody (CAB10170) at 1:1000 dilution. Secondary antibody: HRP Goat Anti-Rabbit IgG (H+L) (CABS014) at 1:10000 dilution. Lysates/proteins: 25ug per lane. Blocking buffer: 3% nonfat dry milk in TBST. Detection: ECL Basic Kit (CABM00020). Exposure time: 10s.