

# LRP4 Rabbit Polyclonal Antibody



CAB10172

---

## Product Information

### Size:

20uL, 50uL, 100uL, 200uL

### Observed MW:

200kDa

### Calculated MW:

212kDa

### Applications:

WB

### Reactivity:

Human, Mouse

## Protein Background

This gene encodes a member of the low-density lipoprotein receptor-related protein family. The encoded protein may be a regulator of Wnt signaling. Mutations in this gene are associated with Cenani-Lenz syndrome.

## Immunogen information

### Gene ID:

4038

### Uniprot

O75096

### Synonyms:

LRP4; CLSS; CMS17; LRP-4; LRP10; MEGF7; SOST2

## Antibody Information

### Recommended dilutions:

WB 1:500 - 1:2000

### Source:

Rabbit

### Isotype:

IgG

### Purification:

Affinity purification

### Immunogen:

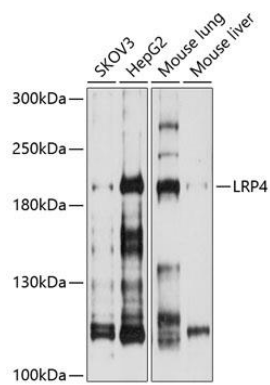
Recombinant fusion protein containing a sequence corresponding to amino acids 1500-1725 of human LRP4 (NP\_002325.2).

### Storage:

Store at -20°C. Avoid freeze / thaw cycles. Buffer: PBS with 0.02% sodium azide, 50% glycerol, pH7.3.

## Product Images

---



Western blot analysis of extracts of various cell lines, using LRP4 antibody (CAB10172) at 1:1000 dilution. Secondary antibody: HRP Goat Anti-Rabbit IgG (H+L) (CABS014) at 1:10000 dilution. Lysates/proteins: 25ug per lane. Blocking buffer: 3% nonfat dry milk in TBST.