

ADAM2 Rabbit Polyclonal Antibody



CAB10188

Product Information

Size:

20uL, 50uL, 100uL, 200uL

Observed MW:

82kDa

Calculated MW:

80kDa/82kDa

Applications:

WB

Reactivity:

Human, Mouse, Rat

Protein Background

This gene encodes a member of the ADAM (a disintegrin and metalloprotease domain) family. Members of this family are membrane-anchored proteins structurally related to snake venom disintegrins, and have been implicated in a variety of biological processes involving cell-cell and cell-matrix interactions, including fertilization, muscle development, and neurogenesis. The encoded protein is a subunit of an integral sperm membrane glycoprotein called fertilin, which plays an important role in sperm-egg interactions. Alternative splicing results in multiple transcript variants encoding different isoforms.

Immunogen information

Gene ID:

2515

Uniprot

Q99965

Synonyms:

ADAM2; CRYN1; CRYN2; CT15; FTNB; PH-30b; PH30; PH30-beta

Antibody Information

Recommended dilutions:

WB 1:500 - 1:2000

Source:

Rabbit

Isotype:

IgG

Purification:

Affinity purification

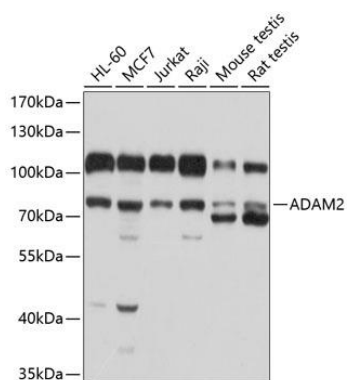
Immunogen:

Recombinant protein of human ADAM2

Storage:

Store at -20°C. Avoid freeze / thaw cycles. Buffer: PBS with 0.02% sodium azide, 50% glycerol, pH7.3.

Product Images



Western blot analysis of extracts of various cell lines, using ADAM2 antibody (CAB10188) at 1:1000 dilution. Secondary antibody: HRP Goat Anti-Rabbit IgG (H+L) (CABS014) at 1:10000 dilution. Lysates/proteins: 25ug per lane. Blocking buffer: 3% nonfat dry milk in TBST. Detection: ECL Basic Kit (CABM00020). Exposure time: 1s.