

# PDE4B Rabbit Polyclonal Antibody



**CAB10196**

---

## Product Information

### Size:

20uL, 50uL, 100uL, 200uL

### Observed MW:

83kDa

### Calculated MW:

57kDa/64kDa/82kDa/83kDa

### Applications:

WB

### Reactivity:

Human, Mouse

## Protein Background

This gene is a member of the type IV, cyclic AMP (cAMP)-specific, cyclic nucleotide phosphodiesterase (PDE) family. The encoded protein regulates the cellular concentrations of cyclic nucleotides and thereby play a role in signal transduction. Altered activity of this protein has been associated with schizophrenia and bipolar affective disorder. Alternative splicing and the use of alternative promoters results in multiple transcript variants encoding different isoforms.

## Immunogen information

### Gene ID:

5142

### Uniprot

Q07343

### Synonyms:

PDE4B; DPDE4; PDEIVB

## Antibody Information

### Recommended dilutions:

WB 1:1000 - 1:3000

### Source:

Rabbit

### Isotype:

IgG

### Purification:

Affinity purification

### Immunogen:

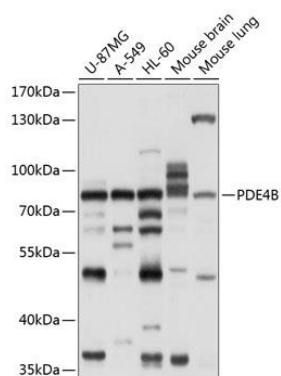
Recombinant fusion protein containing a sequence corresponding to amino acids 1-130 of human PDE4B (NP\_002591.2).

### Storage:

Store at -20°C. Avoid freeze / thaw cycles. Buffer: PBS with 0.02% sodium azide, 50% glycerol, pH7.3.

## Product Images

---



Western blot analysis of extracts of various cell lines, using PDE4B antibody (CAB10196) at 1:1000 dilution. Secondary antibody: HRP Goat Anti-Rabbit IgG (H+L) (CABS014) at 1:10000 dilution. Lysates/proteins: 25ug per lane. Blocking buffer: 3% nonfat dry milk in TBST. Detection: ECL Basic Kit (CABM00020). Exposure time: 1s.